



Your gateway to impactful investment in Northern Namibia

OHANGWENA REGION



INVESTMENT MAP

Harnessing Agro-Ecological Potential and Strategic Location
for Sustainable Growth



OHANGWENA REGION

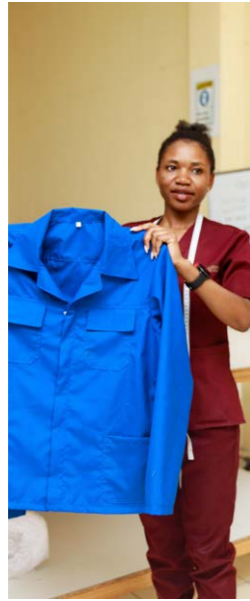
Harnessing Agro-Ecological Potential and Strategic Location for Sustainable Growth



Market intelligence experts
www.monasa.org

Photography by: Studio 7 Advertising
 Design and layout: Clara Mupopiwa

CONTENTS



1

2

3

Acronyms 6
Foreword 7
Executive Summary 8

PART ONE

INTRODUCTION 10
1.1 Namibia's Legal System 12
1.2 Namibia's Investment Climate 13
1.3 Ohangwena Region at a Glance 15
1.4 Methodology 20

PART TWO

WHY INVEST IN OHANGWENA REGION 22
2.1 Reasons to invest in Ohangwena Region 22

PART THREE

PRIORITISED SECTORS FOR INVESTMENT OPPORTUNITIES 32
3.1 Manufacturing Sector 35
3.2 Health Care Sector 37
3.3 Agriculture 41
3.4 Natural Resources and Tourism 41
3.5 Creative Industry 52



4

5

PART FOUR

INVESTMENT CLIMATE AND FACILITATION 56
4.1 Supportive Policies and Legal Environment 56
4.2 Property Rates 59
4.3 Mode of Investment 59

PART FIVE:

THE WAY FORWARD 62
5.1 Policy and regulatory Reforms 62
5.2 Investor Convening 63
5.3 Impact Measurement and Management 64
5.4 Data and Investment Analytics 64

List of Figures

Fig. 1: Administrative Map of Namibia by region 12
Fig. 2: Map of Ohangwena region 15
Fig. 3: Population distribution by constituency 17
Fig. 4: Working-age population composition 18
Fig. 5: Location of Ohangwena's closest borders and regions 22
Fig. 6: Gross Domestic Product by Activity 34

List of Tables

Table 1: Summary of key indicators of the Ohangwena Region 17
Table 2: Wildlife Translocation Record 30
Table 3: Namibia's Specialized Services 40
Table 4: Ohangwena investment opportunities 41
Table 5: Game population estimate comparison (2022-2024) 51

ACRONYMS

AfCFTA	African Continental Free Trade Area	MIRT	Ministry of International Relations and Trade
Agribank	Agricultural Bank of Namibia	MoHSS	Ministry of Health and Social Services
AGRIBUSDEV	Agricultural Business Development Agency	NAA	Namibia Arts Association
AMTA	Agro-Marketing and Trade Agency	NDTC	Namibia Diamond Trading Company
CCIs	Cultural and Creative Industries	NFC	Namibia Film Commission
CBNRM	Community-Based Natural Resource Management	NHCN	National Heritage Council of Namibia
E-IOAs	Emerging Investment Opportunity Areas	NDP6	Sixth National Development Plan
EPZs	Export Processing Zones	NIPDB	Namibia Investment Promotion and Development Board
FIA	Foreign Investment Act	NSA	Namibia Statistics Agency
GDP	Gross Domestic Product	NUST	Namibia University of Science and Technology
ICSID	International Centre for Settlement of Investment Disputes	SACU	Southern African Customs Union
ICT	Information Communication Technology	SADC	Southern African Development Community
IOAs	Investment Opportunity Areas	SASB	Sustainability Accounting Standards Board
IM	Investor Map	SDG	Sustainable Development Goals
MAFWLR	Ministry of Agriculture, Fisheries, Water and Land Reform	SICS	Sustainable Industry Classification System
MAWLR	Ministry of Agriculture, Water and Land Reform	SMEs	Small Medium Enterprises
Meatco	Meat Corporation of Namibia	SORA	State of the Region Address
MEFT	Ministry of Environment, Forestry and Tourism	SWAPO	South West Africa People's Organisation
MIGA	Membership in Multilateral Investment Guarantee Agency	UNDP	United Nations Development Programme
MIME	Ministry of Industries, Mines and Energy	UNFPA	United Nations Population Fund
		VTCs	Vocational Training Centres

FOREWORD

It is with immense pride and optimism that I present to you the Ohangwena Region Investor Map, a comprehensive guide to the economic potential, investment opportunities, and transformative vision of our beloved region.



The Ohangwena Investment Map is a declaration of our readiness to partner with visionary investors who share our commitment to inclusive, impactful development.

For far too long, the Ohangwena has been viewed as an underdeveloped region that has stood on the periphery of the nation's development agenda. What I see is a region of extraordinary untapped economic potential, a people of remarkable resilience and creativity, and a landscape rich with natural resources waiting to be transformed into engines of prosperity. This Investment Map is not merely a document; it is a declaration of our readiness to partner with visionary investors who share our commitment to inclusive, impactful development.

When Her Excellency President Dr. Netumbo Nandi-Ndaitwah appointed me as the fifth Governor of Ohangwena on the 1st of July 2025, she entrusted me with a clear mandate: "to harness the boundless energy and ideas of our people and turn our collective vision into a tangible reality." Therefore, this Investment Map serves as a strategic tool in fulfilling that mandate and provides investors with evidence-based insights into where capital can generate both financial returns and transformative social impact.

In order to steer this collective journey, an Investment Committee has been established under the leadership of the Governor to coordinate and facilitate the implementation of this Map and ensure that investment opportunities evolve into real, measurable outcomes.

The Ohangwena Investment Map represents an invitation to be part of this transformation. Whether you are a local entrepreneur, a regional business, an international fund manager, or a development finance institution, there is a place for your capital, your expertise, and your commitment in building the new Ohangwena.

Together, we will transform potential into prosperity, resources into revenue, and vision into reality.

Hon. Kadiva Hamutumwa
Governor
Ohangwena Region
Republic of Namibia

EXECUTIVE SUMMARY

The Ohangwena Regional Investment Map (IM) is a market intelligence tool developed by the Office of the Regional Governor within the Office of the President to provide an in-depth look at the investment opportunities available in the designated northern Namibian landscape of Ohangwena.

This IM aims to showcase the region's strategic and economic opportunities across one of Namibia's most dynamic yet underserved regions. While historically characterised by subsistence agriculture and low levels of formal employment, Ohangwena is experiencing a shift towards diversified business activity, infrastructure development, and entrepreneurship. With the government's renewed focus on northern regions and growing alignment with national sustainable development goals, Ohangwena is poised to become an attractive destination for both domestic and foreign investment.

Ohangwena is poised to become one of Namibia's most promising investment frontiers – where rural transformation meets economic opportunity.

The IM is based off a thorough assessment of existing regional investment needs and additional commercial opportunities in line with regional development ambitions. The document will investigate specifically sectoral opportunities, demographic drivers, regional disparities, and forward-looking policy recommendations to guide private and public investments aligned with the country's various long-term strategic development documents, such as Vision 2030, the 6th National Development Plan (NDP6), and the South West Africa People's Organisation (SWAPO) Party Manifesto.

The Ohangwena Region IM is strategically positioned within Namibia's National Development Framework, with emphasis placed on five key sectors: manufacturing, healthcare, agriculture, tourism and creative industry. The overarching goal of this IM is to ensure inclusive rural transformation, youth empowerment, infrastructure expansion, and economic upliftment of the region.

DISCLAIMER

This Investment Map was established to provide a guideline for investors on how best to access essential information regarding investment opportunities available in the Ohangwena Region as well as what processes investors should follow to invest in the region.

Depending on the nature of the investment, investors conduct their analysis and develop feasibility studies and business plans and undertake environmental impact assessments for their investment plans.

Information contained in this IM should therefore be used only for the intended purposes.



INTRODUCTION

INTRODUCTION

Namibia is located in the southwestern part of Africa, bordered by Angola to the north, Zambia to the northeast, Botswana to the east, South Africa to the south, and the Atlantic Ocean to the west¹. The Ohangwena region, measures approximately 10 703km² (4,132.44 mi²), with a population of 337,729 is the 2nd most populated region in Namibia. Ohangwena region is situated on a flat plain, approximately 1100m above sea level. Stretches along the Southern part of Angolan bordering the Cunene and Cuando regions Its strategic geographical position provides access to regional and international markets through modern ports, airports, and cross-border trade corridors, including the Trans-Cunene and Trans-Capivi Corridors, which connect the country to major Southern African Development Community (SADC) markets. According to United Nations Population Fund (UNFPA), the estimated combined population of SADC countries, excluding South Africa, is approximately 349.5 million for mid-2025.²

Namibia’s political stability, sound macroeconomic management, and abundant natural resources have made it an increasingly attractive destination for investment in Southern Africa.

Namibia’s political stability, sound macroeconomic management, and abundant natural resources have made Namibia an increasingly attractive destination for investment in Southern Africa. The availability of land, the potential for renewable energy, and the growing industrial base present new frontiers for both domestic and foreign investors. Namibia also benefits from a young and expanding workforce, with over 60% of the population under the age of 30, creating opportunities for human capital development and innovation-driven industries.

Guided by the NDP6, Namibia’s development trajectory focuses on industrialisation, inclusive growth, and sustainable resource utilisation. These plans prioritise key sectors such as agriculture, renewable energy, manufacturing, infrastructure, and digital transformation, with strong alignment to the Sustainable Development Goals (SDGs), Vision 2030, NDP6, and the SWAPO Party Manifesto Implementation Plan.

While Namibia’s economy has traditionally relied on mining, agriculture, and tourism, the government is intensifying efforts to diversify investment into non-traditional sectors such as oil & gas, green hydrogen, logistics, agro-processing, and technology-based services. Over the past decade, Foreign Direct Investment (FDI) inflows have been concentrated in the mining and extractive industries, which together account for over 40% of exports and a significant share of the Gross Domestic Product (GDP). However, emerging FDI trends show growing interest in renewable energy, infrastructure, and manufacturing sectors with strong growth potential at regional levels such as Ohangwena, Oshikoto, and Omaheke.

¹ Africa Net Zero Lawyers Alliance & Herbert Smith Freehills. (2024, August). Africa Net Zero Investment Toolkit: Namibia. https://cdn.prod.website-files.com/65bb9ebee081d228a8003b56/66e438aea07afee453f065ea_Africa%20Net%20Zero%20Investment%20Toolkit%20-%20Namibia.pdf. Accessed 21 October 2025. pp.1
² UNFPA, <https://www.unfpa.org/data/world-population>



To enhance private sector participation and accelerate regional industrialisation, Namibia has implemented a series of policy reforms and development initiatives, including the Industrialisation, Trade and SME Development Policy (2021–2030), the Namibia Investment Promotion and Development Board (NIPDB) Framework, and the National Renewable Energy Policy. These policies are complemented by regional development plans such as the Ohangwena Regional Development Plan (2023–2028), which seeks to strengthen the region’s role in cross-border trade, agro-industrial processing, and logistics services.

Fig. 1: Administrative Map of Namibia by region



Source: Namibia Statistics Agency, Digital Namibia Portal (<https://digitalnamibia.nsa.org.na/Ohangwena>)

1.1 NAMIBIA'S LEGAL SYSTEM

Namibia is a sovereign and democratic state founded on the supremacy of the Constitution of the Republic of Namibia and the rule of law. Namibia has an independent judicial system and protection of property and contractual rights.

The Namibian government recognises the significant role FDI can play in the development of the country. This is reflected in various key laws, policies and strategies, such as the Constitution of the Republic of Namibia, Vision 2030, National Development Plans, Namibia’s Industrial Policy, the Growth at Home Strategy and the Business and Intellectual Property Authority Act 8 of 2016. In 2025, Namibia’s president announced that a new Namibia Investment Promotion and Facilitation Bill (NIPFB) is in its final stages of completion.

The civil law of Namibia is based mostly on uncodified Roman-Dutch common law, although English law has also influenced Namibian law in several ways, mainly in the areas of corporate and mercantile law. In addition, Namibian law is further constituted by parliamentary legislation, subordinate legislation, and the customary law of the indigenous people of Namibia³.

1.2 NAMIBIA'S INVESTMENT CLIMATE

The investment climate in Namibia is positive, and the country is politically stable, with a smooth, constitutional transfer of power following the swearing-in of Namibia’s first female president, Netumbo Nandi-Ndaitwah, on March 21, 2025. The Namibian government prioritises attracting more domestic and foreign investment to stimulate economic growth, combat unemployment, and diversify the economy⁴. The Ministry of Industries Mine and Energy (MIME) and Ministry of International Relations and Trade (MIRT) are the governmental authority primarily responsible for carrying out the provisions of the Foreign Investment Act of 1993 (FIA)⁵.

The FIA calls for equal treatment of foreign investors and Namibian firms, including the possibility of:

- fair compensation in the event of expropriation,
- international arbitration of disputes,
- the right to remit profits, and
- access to foreign exchange.

The government emphasises the need for investors to partner with Namibian-owned companies. Additionally, the country continues to offer key advantages for inward FDI, such as:

- Peace and stability
- an independent judicial system,
- protection of property and contractual rights,
- good quality physical and telecommunications infrastructure, and
- easy access to South Africa and the Southern African region.

Namibia is upgrading its transportation infrastructure to facilitate investment and position itself as a regional logistic hub. There are plans to extend and rehabilitate the national rail line, notably to improve the connection from Walvis Bay port to neighbouring countries, such as Botswana. Based on the World Bank Economic Forum 2020 report, Namibia has the best roads on the African continent⁶. Namibia also has access to the African Continental Free Trade Area (AfCFTA), and markets in Europe and Asia. With the second-highest solar radiation in the world and vast land and wind resources, Namibia is also positioned to be a global leader in renewable energies and green hydrogen, with potential to improve local and regional access to energy.

3 Africa Net Zero Lawyers Alliance & Herbert Smith Freehills. (2024, August). Africa Net Zero Investment Toolkit: Namibia. https://cdn.prod.website-files.com/65bb9ebee081d228a8003b56/66e438aea07afee453f065ea_Africa%20Net%20Zero%20Investment%20Toolkit%20-%20Namibia.pdf. Accessed 21 October 2025, pp.9-11.

4 U.S. Department of State. (2025). 2025 Namibia investment climate statement. https://www.state.gov/wp-content/uploads/2025/09/638719_2025-Namibia-Investment-Climate-Statement.pdf. Accessed 16 October 2025.

5 Foreign Investment Act, 1993 (Act No. 27 of 1993). Government Gazette of the Republic of Namibia, Windhoek. Accessed 16 October 2025.

6 World Economic Forum. (2020). The Global Competitiveness Report: Special Edition 2020 – How Countries are Performing on the Road to Recovery. Geneva: World Economic Forum. Retrieved from <https://www.weforum.org/reports/the-global-competitiveness-report-2020>. Access 16 October 2025.

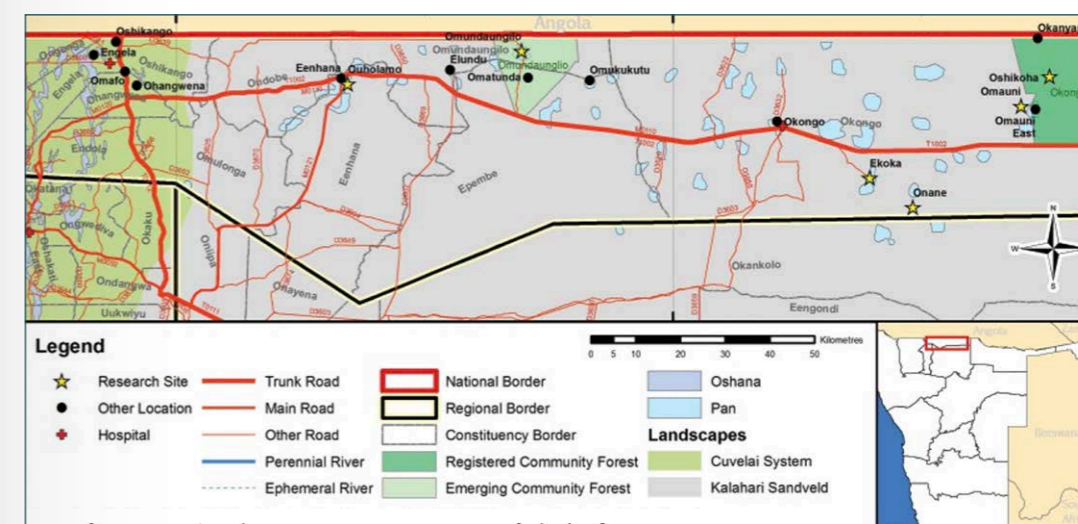


1.3 OHANGWENA REGION AT A GLANCE

The Ohangwena Region, located along the northern border with Angola, holds strategic importance as a gateway for trade and investment. With access to regional markets through Oshikango, Enhana, and Engela, the region is being positioned as a commercial and industrial hub within the northern development corridor. We anticipate that investments in infrastructure, renewable energy, and industrial parks will accelerate economic transformation and promote inclusive development.

The key attributes of the Ohangwena Region, including key economic indicators, are summarised in Table 1. The region has about 337,729 people (approximately 10% of Namibia's population), deriving their livelihoods from land and the Ohangwena II Aquifer, which has been tapped; however, further developments are underway in order to derive economic benefit and livelihood out of it. Based on the last Namibia Statistics Agency (NSA) household and expenditure report, out of the fourteen regions, Ohangwena is ranked 9th in per capita income, at about N\$ 18 082,⁷ below the national average (N\$28 434). Despite it being below the national average, it portrays a reasonable purchasing power and potential for growth.

Fig. 2: Map of Ohangwena region



Source: Legal Assistance Centre, Ministry of Agriculture, Water and Land Reform (MAWLR) and Namibia Statistics Agency

The Ohangwena Region IM would therefore complement the country's National Development Frameworks, specifically by providing evidence data and concrete recommendations on viable investment opportunities based on the identified needs: The region's strategies would be informed by filling sector gaps and creating effective entry points to initiate public-private investment dialogue platforms.

⁷ Namibia Statistics Agency. (2016). Namibia Household Income and Expenditure Survey (NHIES) 2015/2016 [PDF]. https://cms.my.na/assets/documents/NHIES_2015-16.pdf. Accessed 17 October 2025. pp.95

Table 1: Summary of key indicators of the Ohangwena Region

Name	Ohangwena Region
Location	Northern Namibia, bordering on the Cunene region of Angola in the north and sharing a border with the Cuando region in the far northeast, lies on the Cuvelai basin plain, 1,100m above sea level
Area	10 703 km ²
Population	337 729 (2023, NSA statistics)
Population Growth	+37.6% (2011–2023) PCH
Population Density	31.5 persons/km ²
Average Household Size	4.8 persons
Rural/Urban Split	85.5% rural - 14.5% urban
Major Languages	Oshiwambo (dominant)
Neighbouring Countries and population – with accessible road network for trade from the region	Democratic Republic of the Congo (109.28 m), Tanzania (68.56m), Angola (37.89 m), Mozambique (34.63m), Malawi (21.66 m), Zambia (21.31m), Zimbabwe (16.63m), and Botswana (2.52m)
Climate/Rainfall/Temperature	Semi-arid / sub-tropical; annual rainfall – 450-550mm per year
Temperature Range	Summer: 20-36°C (sometimes up to 40°C); Winters: mornings 3-10°C, daytime 18-22°C
Major Economic Activities	Subsistence agriculture (maize, millet/mahangu), livestock rearing, small-scale trade, cross-border trade
Water/Aquifer Resource	“Ohangwena II” aquifer (extends across Angola-Namibia border)
Infrastructure & Utilities	84.3% of households access safe water; 20.7% have electricity for lighting.
Major local authorities	Helao Nafidi, Eenhana & Okongo village council
Strategic/Potential Sectors	Agriculture (agro-processing, aquaculture), healthcare, manufacturing (property development – residential and retail, export processing zone, import, value addition & export, logistics and transportation), tourism, hospitality, and the creative industry.
Gross Regional Product / Per Capita Income	N\$ 18 082 (2015/16, NSA's Household Income and Expenditure Survey)

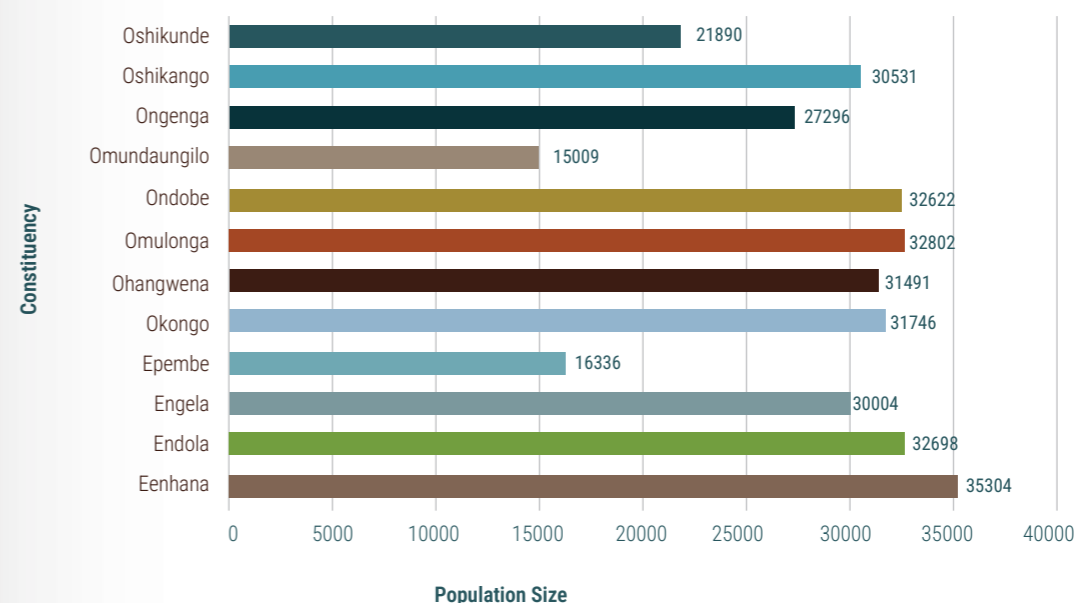
Note: PCH is Population and Housing Census, and NGEHD is Namibia Human Development Index as per Global Economy.com webpage

8 TheGlobalEconomy.com. (n.d.). Namibia: Human development index (0–1). [https://www.theglobaleconomy.com/Namibia/human_development/#:~:text=Human%20Development%20Index%20\(0%20%2D%201\)&text=The%20latest%20value%20from%202023,to%202023%20is%200.588%20points.](https://www.theglobaleconomy.com/Namibia/human_development/#:~:text=Human%20Development%20Index%20(0%20%2D%201)&text=The%20latest%20value%20from%202023,to%202023%20is%200.588%20points.) Accessed 23 October 2025. [Online]

1.3.1 Population by Constituency

The Ohangwena Region, with a total population of 337,729, is composed of 12 constituencies with a relatively balanced population distribution across both urban and rural areas. Among the most populous constituencies are Eenhana (35,304), Omulunga (32,802), Endola (32,698), and Ondobe (32,622), each hosting over 30,000 residents. Constituencies such as Okongo (31,746), Ohangwena (31,491), Oshikango (30,531), Engela (30,004) and Ongenga (27,296) also reflect substantial population densities. In contrast, smaller constituencies like Epembe (16,336), Oshikunde (21,890), and Omundaungilo (15,009) indicate more sparsely populated and predominantly rural zones⁹.

Fig. 3: Population distribution by constituency



Source: Primary data, regional statistics retrieved from NSA (2023)

Based on figure 3 above, out of 12 constituencies, each has distinct development priorities and infrastructure gaps. Ohangwena and Engela remain predominantly rural, with limited health infrastructure and access to piped water¹⁰; Oshikango, adjacent to the Angolan border, is a key logistics hub with customs and warehousing potential; Eenhana, the regional capital, has witnessed growth in tertiary education (NUST Eenhana Satellite Campus), small-scale trade, and housing development.

Three major local authorities with varying population sizes anchor the Ohangwena Region's urban landscape. Helao Nafidi, with 28,508 inhabitants¹¹, is the main urban centre and a key cross-border trading hub close to the Angolan border, making it essential for regional logistics and trade. The next largest town in the district is Eenhana, which has 16,588¹² residents and serves as Ohangwena's administrative and service centre. Lastly, Okongo village council situated on the eastern part of the region was proclaimed a village council in 2015. It has a population of 3,564 residents and is regarded as the district capital of Okongo Constituency¹³.

9 Namibia Statistics Agency. (2023). Regional profile – Ohangwena. Windhoek, Namibia: NSA. <https://nsa.org.na/document-category/regional-profiles/ohangwena-region/#>. Accessed 24 July 2025. p.4

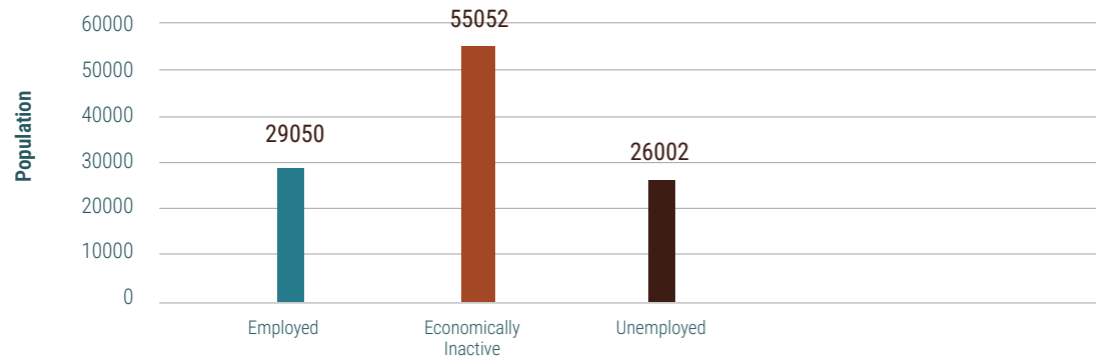
10 Ohangwena Regional Council. (2022). Constituency profiles – Ohangwena Region (pp. --). Eenhana, Namibia: Ohangwena Regional Council. <https://ohangwenarc.gov.na/ohangwena-constituency>. Accessed 24 July 2025. [Online, n.p]

11 Namibia Statistics Agency. (2023). Regional profile – Ohangwena. Windhoek, Namibia: NSA. <https://nsa.org.na/document-category/regional-profiles/ohangwena-region/#>. Accessed 24 July 2025. p.4

12 Namibia Statistics Agency. (2023). Regional profile – Ohangwena. Windhoek, Namibia: NSA. <https://nsa.org.na/document-category/regional-profiles/ohangwena-region/#>. Accessed 24 July 2025. p.4

13 Wikipedia. [Online]. Okongo village report of 2023. In Wikipedia. https://en.wikipedia.org/wiki/Okongo?utm_source=chatgpt.com. Accessed 30 October 2025.

Fig. 4: Working-age population composition



Source: Primary data, retrieved from NSA (2023)

Figure 4 above reflects that the challenges of youth unemployment continue to persist, hovering over 51.3% of the total population in the region. In terms of socio-economic development, about 38.3% of households have access to improved sanitation, and 20.7% have grid electricity¹⁴.

In terms of literacy rate, the region stands at 84.6%. Additionally, household reliance on farming in 2023 stood at 22.1%, and pension grants are at 23.8%.

Partially, this demonstrates that the region possesses a latent human capital advantage ideal for labour-intensive and skill development initiatives. The predominance of rural households and their dependence on subsistence farming illustrates untapped potential for agro-processing ventures, irrigation-based horticulture, and climate-resilient agriculture that can shift the primary production into value-added activities.

Regarding the domestic market and economies of scale for localised manufacturing, informal trade networks and service expansion are underpinned by the region's high population density. The high share of households relying on pension grants also indicates the stabilising role of social protection systems, which can support microenterprise development if coupled with targeted youth training, digital access, and financial inclusion strategies.

Given Ohangwena's strategic location along key transboundary corridors and proximity to Angola, cross-border trade facilitation and logistics services present additional growth frontiers. These dynamics collectively offer fertile ground for targeted investment interventions in agriculture, manufacturing, healthcare and tourism.

Overall, this distribution illustrates the importance of tailored service delivery and investment strategies that address both densely settled urban constituencies and remote rural areas, especially in terms of infrastructure, access to basic services, and economic opportunities.

¹⁴ Namibia Statistics Agency. (2023). Household amenities and services report (pp. [xx-yy]). Windhoek, Namibia: NSA. Retrieved from <https://nsa.org.na/document/namibia-cpi-bulletin-october-2023-pdf/>. Accessed 24 July 2025. p150-151.

KEY INDICATORS AT A GLANCE:

Northern Namibia

Population: **337 729**
Population Growth: **+37.6%**

Average Household Size: **4.8 persons**

Main Language: **Oshiwambo**

Annual rainfall: **450-550mm per year**

Summer: 20-36°C
Winters: 3-10°C, (daytime 18-22°C)

Major Economic Activities:

- Subsistence agriculture
- livestock rearing
- cross-border trade



1.4 METHODOLOGY

The regional investor map is informed by an 8-step methodology, which is detailed below:

Defining the regional priority starting point –

distilling and comparing regional needs and national policy priorities to identify sectors where there is demonstrable political/financial commitment to stimulate development & investment.

Identifying critical subsectors to focus on –

prioritising subsectors where there are sustainable development opportunities and policy/investment momentum.

Deriving specific investment opportunity areas (IOAs) –

identifying impactful business models within priority sub-sectors and sub-regions where new capital can facilitate, scale, and identify potential ‘white spaces’ where new business models are most needed.

The subsequent priority sectors and IOAs identified are subject to change based on evolving developments, enabling environmental conditions, and national development priorities, which will require a regular review. It is, therefore, possible for emerging opportunities presented on this platform to transition to substantive IOAs within a short timeframe, depending on shifts in the enabling ecosystem.

Sectors and subsectors are defined by a taxonomy that aligns with the Sustainability Accounting Standard Board’s (SASB) Sustainable Industry Classification System (SICS), which helps categorise company and investor activity under a sustainability lens. The Investor Map process identifies five priority sectors with strong regional development outcomes and policy alignment.

These include the following sectors, with subsectors identified:



MANUFACTURING



TOURISM



HEALTHCARE



AGRICULTURE



CREATIVE INDUSTRY

WHY INVEST IN OHANGWENA REGION



- Additionally, proximity to Ondangwa Airport enhances regional mobility and access to domestic and international markets. These combined infrastructure assets make connectivity between Ohangwena, other Namibian regions, and southern Angola safer, easier, and more cost-effective, positioning the region as a strategic trade and logistics corridor in northern Namibia.

D) CULTURAL AND ECO-TOURISM POTENTIAL

- The Ohangwena Region offers unique opportunities for eco- and cultural tourism that reflect the natural beauty, traditional heritage, and cross-border character of northern Namibia. Although the region does not host large national parks like Etosha, it forms part of the greater Cuvelai-Etosha Basin, a vast seasonal wetland ecosystem shared with Angola. This basin supports rich birdlife, natural pans, and traditional homesteads that attract visitors seeking authentic rural experiences. The Oshikango-Santa Clara corridor also serves as a gateway for tourists travelling between Namibia and Angola, presenting opportunities for hospitality, tour services, and cultural exchanges.
- Community-based tourism initiatives are growing in Ohangwena, particularly around traditional villages and craft markets. The region is home to a vibrant cultural identity, with visitors able to experience the Aawambo people's heritage through local homesteads (ekandas), traditional cuisines, music, and crafts. Investment opportunities exist in the development of guest lodges, cultural centres, guided heritage tours, and cross-border tourism packages that connect Ohangwena with the Cunene and Cuando regions in Angola.

“Rising community-based tourism is transforming Ohangwena’s cultural heritage into new opportunities for hospitality, craft, and cross-border exchange.”

E) CULTURAL FESTIVAL AND HERITAGE ATTRACTIONS

- Several traditional and cultural events in the Ohangwena region have the potential to develop into robust tourism products. The Eenhana Annual Trade Fair, the Omushimba Carnival, and the Omaludi Agricultural Festival (which features a cattle-showcasing event) draw a significant amount of local and regional visitors every year¹⁹. These cultural events, when packaged with accommodation and transport services, offer investment potential in event tourism, food and beverage industries, local art markets, and livestock-agriculture linkages.
- Furthermore, the historical sites related to Namibia’s liberation struggle, particularly around Eenhana and Engela, carry heritage significance and can be developed into memorial-tourism destinations through small museums and guided heritage routes.

F) EXPORT PROMOTION ZONES

- Ohangwena Region has strategically earmarked land and infrastructure to promote industrial and commercial investment. Key locations within the region are being developed for Export Processing Zones (EPZs), industrial parks, and tourism facilities, particularly around Oshikango, Eenhana, and Engela²⁰. Investors are invited to take advantage of these designated areas, which are positioned near the busy Oshikango – Santa Clara border post, offering direct access to Angola’s Cunene and Cuando region and regional markets within SADC.

¹⁹ Namibia Statistics Agency (2023). Feature: Namibian farmers carry forward tradition of cattle festival – “Omaludi Festival”. Xinhua. Retrieved from <https://english.news.cn/20230605/6e3e3ae994c7419d9f1d221459b617ec/c.html>. Accessed 18 October 2025.

²⁰ Government of Namibia. (n.d.). Namibia export processing zone (EPZ) industrial development strategy: Harnessing Namibia’s manufacturing and exporting potential: Investor guide. Retrieved October 18, 2025, from https://www.namibiaembassy.be/pdf/EPZ.pdf?utm_source=chatgpt.com. Accessed 18 October 2025. pp.4



- The region benefits from a network of tarmac and gravel roads connecting industrial sites to national highways and key border points, facilitating the efficient transportation of goods. Additionally, the proximity to Namibia's electricity grid ensures a reliable energy supply for industrial and commercial operations. These combined advantages make Ohangwena an attractive destination for manufacturing, logistics, agro-processing, and tourism-related investments.

G) ECONOMIC STRENGTHS

The Ohangwena Region has a diverse and dynamic economy, with key sectors including livestock farming, crop agriculture, cross-border trade, small-scale manufacturing, and cultural tourism. The region's strategic location along the Angola border, combined with abundant natural resources, entrepreneurial spirit, and a diligent workforce, makes it an attractive investment destination with significant growth potential.

Water Resources in Ohangwena Region:

Regional Hydrological and Geological Context

The Ohangwena Region forms part of the Cuvelai-Etosha Basin, a landscape characterised by numerous drainage channels known as oshanas that direct water southwards toward the Etosha Pan. These oshanas fill during the rainy season and cut into the underlying silt, clay, limestone, and sandstone sediments, making the area susceptible to seasonal flooding. The most affected constituencies include Endola, Ondobe, Omulonga, Engela, Ongenga, Oshikango, Eenhana, and Ohangwena²¹.

Geologically, the region lies on Kalahari Group geological formations, underlain by mid-Proterozoic crustal rocks of the Congo Craton. This formation includes layers of sedimentary rocks from the Damara sequence, Karoo rocks, and Cretaceous deposits overlain by unconsolidated Kalahari sands up to 600 metres thick. These sandstones and conglomerates contribute to the recharge capacity of underground aquifers, particularly in the Ohangwena basin²².

The Cuvelai Basin and Surface Water Systems

Surface water in the Ohangwena Region is primarily derived from seasonal floods originating from the Cuvelai system. Although there are no perennial rivers or natural lakes, the seasonal inflow of floodwaters is critical to the region's hydrology and rural economy. These floodwaters provide high-quality water for domestic and livestock use, replenish grazing lands, and recharge groundwater systems, sustaining life and agriculture in the region until evaporation occurs²³.

Inhabitants also benefit from ephemeral rivers, pans, and reservoirs, which collect rainwater during the wet season. This water, together with harvested rainwater from rooftops, forms a vital supplementary resource for both households and small-scale farming²⁴.

²¹ Tamayo, A., et al. (2011). Hydrological characteristics of the Cuvelai Basin. Cited in: Stubenrauch Planning Consultants (2025). Environmental Scoping Report for the Proposed Development Activities in Helao Nafidi, Ohangwena Region, p. 19.

²² Stubenrauch Planning Consultants (2025). Environmental Scoping Report for the Proposed Development Activities in Helao Nafidi, Ohangwena Region, pp. 18–19.

²³ Mendelsohn, J., Jarvis, A., & Robertson, T. (2013). Atlas of the Cuvelai-Etosha Basin. Cited in: Stubenrauch Planning Consultants (2025). Environmental Scoping Report for the Proposed Development Activities in Helao Nafidi, Ohangwena Region, pp. 20–21.

²⁴ "ibid".

Groundwater and the Ohangwena Aquifer I and II Systems

Groundwater is the primary and most reliable water resource in the Ohangwena Region. The region hosts several aquifer systems, notably the Ohangwena Kalahari Aquifer (often referred to as Aquifer II), which provides year-round groundwater, though some areas have saline water unsuitable for direct human consumption without treatment²⁵. The aquifer has been tapped however further development is underway in order to derive economic benefit and livelihood out of it.

Therefore, water abstraction in the region is carried out through boreholes and traditional wells, while NamWater supplements local supply by importing water from the Calueque Dam in Angola²⁶.

The Ohangwena Aquifer II is also a transboundary groundwater body extending across Namibia and Angola, offering long-term potential for sustainable water extraction, irrigation, and agro-industrial development. Its geological structure, comprising porous Kalahari sandstones, supports high recharge rates during flood seasons, positioning the region as an important water corridor within the Cuvelai Basin.

Strategic Significance for investor

Water resources in Ohangwena play a strategic economic and environmental role. The combination of the Cuvelai floodplain, Ohangwena Aquifer II, and Kalahari geological formations creates unique opportunities for:

- Agro-industrial development:** leveraging groundwater and seasonal floods for irrigation and value-added crop production.
- Urban and industrial expansion:** particularly around Helao Nafidi and Oshikango, where access to groundwater supports settlement and commercial infrastructure.
- Sustainable livelihoods:** through improved water security for rural communities and livestock rearing.
- Investment opportunities:** water availability positions Ohangwena as a viable location for agribusiness, food processing, and eco-based industries.

As highlighted in the Environmental Scoping Report, the Cuvelai-Etosha Basin supports more people per unit area than most rural places in Southern Africa, owing to its fertile soils and access to shallow groundwater²⁷. This is an advantage to the agri potential that we have because without water you cannot develop anything. The aquifer has the potential to convert Ohangwena into a greenfield of production.

Roads: the region is served by a network of tarmac and gravel roads linking it to other northern Namibian regions, such as Oshana, Oshikoto, and Kavango East, and to the national capital, Windhoek, via the B1 highway. The Oshikango–Santa Clara border post provides a critical link for cross-border trade with Angola, facilitating the movement of goods, services, and human resources.

Air transport: The region benefits from Ondangwa Airport, located within a reasonable distance, which supports domestic travel and cargo movement. Smaller airstrips, such as the Eenhana and Okongo airstrips, provide additional access for light aircraft, supporting tourism and business logistics.

²⁵ "ibid".

²⁶ Stubenrauch Planning Consultants (2025). Environmental Scoping Report for the Proposed Development Activities in Helao Nafidi, Ohangwena Region, pp. 18–19.

²⁷ Mendelsohn, J., Jarvis, A., & Robertson, T. (2013). Atlas of the Cuvelai-Etosha Basin. Cited in: Stubenrauch Planning Consultants (2025). Environmental Scoping Report for the Proposed Development Activities in Helao Nafidi, Ohangwena Region, pp. 20–21.



Telecommunication services: Ohangwena is well-served with cellular networks, internet connectivity, radio, and postal services, enabling smooth communication for businesses, investors, and residents alike.

Electricity: Most urban and semi-urban areas in Ohangwena have access to a reliable electricity supply connected to the national grid, ensuring that investors and households have dependable power for industrial, commercial, and domestic use.

H) NATURAL RESOURCES AND GOOD CLIMATIC CONDITIONS

There are about eight major vegetation types in the Cuvelai Basin, strongly influenced by various factors such as soil, rainfall and major underground freshwater sources. Helao Nafidi is located in the Cuvelai drainage area.

Numerous grass species primarily cover the iishanas and other lowlands in the area. On higher ground (omitunda) between the drainage channels, mopane trees and shrubs dominate the woodlands; however, a variety of other trees typical of Kalahari woodlands are also found in some areas of the Cuvelai Drainage. Makalani palms are prominent where the soil has some salinity²⁸. Other trees that could be observed on site include the marula, bird plum, jackal berry and acacia species.

Overall, Ohangwena's good location, natural resources, infrastructure, and skilled people make it a promising place for investment, able to support local and international business activities.

Climate

The climate of the Ohangwena Region is classified as tropical semi-arid with a dry season of 5-6 months²⁹. The mean annual rainfall in the Ohangwena Region varies between 450 and 550 mm per year, increasing from west to east. The rain occurs usually between October and May, concentrating mainly on the period January-March. Analysis of rainfall in Northcentral Namibia over the past 31 years indicated that 11 of those years had inadequate rainfall necessary for crop production, with surface waters also evaporating quickly or seeping away into the sandy soils³⁰. Regardless of the rainfall shortfall, the region still enjoys optimal temperatures between 24 and 32°C and an average minimum temperature between 8 and 18°C.

“
By embracing technology, partnerships, and blended financing, Ohangwena is building the foundations for inclusive and sustainable investment growth.”

²⁸ Helao Nafidi Town Council. (2025). Environmental Assessment Scoping Report for the proposed development activities in Helao Nafidi, Ohangwena Region (SPC Reference HELAO/034). Stubenrauch Planning Consultants. https://eia.meft.gov.na/screening/6432_oshikango_extension_8_fesr.pdf. Accessed 18 October 2025. pp.

²⁹ Helao Nafidi Town Council. (2025). Environmental Assessment Scoping Report for the proposed development activities in Helao Nafidi, Ohangwena Region (SPC Reference HELAO/034). Stubenrauch Planning Consultants. https://eia.meft.gov.na/screening/6432_oshikango_extension_8_fesr.pdf. Accessed 18 October 2025. pp.16

³⁰ Helao Nafidi Town Council. (2025). Environmental Assessment Scoping Report for the proposed development activities in Helao Nafidi, Ohangwena Region (SPC Reference HELAO/034). Stubenrauch Planning Consultants. https://eia.meft.gov.na/screening/6432_oshikango_extension_8_fesr.pdf. pp.17

I) TOURISM OPPORTUNITIES

Tourism in the Ohangwena Region presents emerging potential grounded in community-based conservation, structured wildlife governance, and a national Community-Based Natural Resource Management (CBNRM) framework that enables communities to manage natural resources sustainably. The framework aligned with national priorities including:

- National Development Plan Six (NDP6)
- Vision 2030

The Communal Conservation Programme of Namibia remains central to this potential. This programme aims to reconnect conservation with rural development, by granting communities rights over wildlife and tourism under the Nature Conservation Amendment Act, Act 5 of 1996 . The program enable:

- Income generation for the communities,
- Improved livelihoods,
- Biodiversity protection,

Okongo Conservancy

Okongo Conservancy represents one of the strongest nature-based tourism prospects in Ohangwena Region due to its 5,000-ha wildlife core area and a mix of naturally occurring species and translocated wildlife populations. The conservancy is jointly managed by MEFT and the Okongo Conservancy Management Committee, demonstrating institutional capacity and compliance, both essential for tourism investors.

Ecological and Tourism Value

The conservancy hosts a diverse wildlife base composed of:

- Naturally occurring species such as steenbok, duiker, vervet monkey, jackal, warthog leopard, cheetah, and occasional elephants; and
- Translocated species including eland, kudu, giraffe, roan antelope, and plains zebra.

Wildlife Translocation

Table 2 Wildlife Translocation Record

Species	Year	Number
Kudu	2011	14
Eland	2016	60
Giraffe	2019	4
Roan Antelope	2021	8
Plains Zebra	2021	7
Plains Zebra	2023	14

Source: Okongo Conservancy. (2025). Game Count Statistics: 2022–2024 financial year – Okongo Conservancy wildlife core area

This diversity and translocations positions Okongo Conservancy for wildlife viewing, guided walks and camping facilities around traditional communities, an indicator of long-term ecological viability and cultural-tourism offerings.

J) HEALTH SERVICES

The Ohangwena Region is served by a network of hospitals, healthcare centres, and clinics, ensuring accessible medical services for residents and investors alike. Key facilities include Eenhana State Hospital, Engela Hospital, and several district clinics and mobile health units³¹. These facilities provide primary, secondary, and referral health services, including maternal and child health, emergency care, and outpatient services. The ongoing development of healthcare infrastructure and investment in modern equipment assures investors of reliable, quality health care within the region.

K) PEACE AND SECURITY

Namibia consistently ranks among the most peaceful countries in Africa, and the Ohangwena Region is no exception³². The region enjoys political stability, low crime rates, and a secure environment, creating a safe space for business and investment. Local authorities work closely with communities to promote social cohesion and positive engagement, ensuring that investors can operate in harmony with residents. This stability is a critical factor in supporting long-term investment and sustainable development.

L) LEADERSHIP COMMITMENTS

The Governor’s Office under the Office of the President, together with sector ministries at central government, particularly those aligned to key economic clusters, the Regional Council, local authorities and traditional leaders, in collaboration with private sector associations, are committed to facilitating investments and driving regional developments³³. Investor facilitation desks are established to provide accurate information, guidance, and support to prospective investors. The region, alongside central government institutions, continues to improve access to land, utilities, and infrastructure, leveraging sector budgets, local council resources, and development partner support. These measures ensure that investors have the necessary enabling environment for both business operations and growth.

The Honourable Governor Kadiva Hamutumwa, in her State of the Region Address (SORA) 2025, pointed out seven priorities to tackle: the regional social economic development through access to quality water, road and network optimisation, agriculture, textile manufacturing, the crafts industry, tourism, sports and creative arts³⁴. Among its regional peers, the region demonstrates its commitment to the regional development agenda.

2.2 INVESTMENT OPPORTUNITIES IN OHANGWENA REGION

In developing and implementing the investment map in the Ohangwena region, a transformative, doing-things-differently, and innovative business model will be required so as to attract more partnerships, investments, and capital from both the public and private sectors, from within and outside the country. Through the transformative approach, the region will be able to scale up and infuse technology use, moving beyond market access to market creation and creating engagement platforms through agriculture, manufacturing, healthcare, and tourism, forming a strong production, creating gateways and processor associations, and enforcing contractual agreements.

The use of business models for different types of financing, including blended financing, cannot be avoided. In general, the region has the following investment opportunities:

³¹ Namibia Ministry of Health and Social Services. (2022). Annual health facilities report: Ohangwena Region. Windhoek: MoHSS. <https://www.mhss.gov.na>. Accessed 18 October 2025. [Online]
³² Namibia Police Force. (2023). Crime and safety report: Northern Regions of Namibia. Windhoek: NPF. <http://www.namibiapolice.gov.na>. Accessed 18 October 2025. [Online]
³³ Ohangwena Regional Council. (2023). Investment facilitation and regional development report. Windhoek: ORC. <https://www.orc.org.na>.
³⁴ Republic of Namibia, Office of the Governor, Ohangwena Region. (2025). State of the Region Address (SORA), Governor of Ohangwena Region, Monte Carlo Conference Hall, Eenhana.

I) CROP FARMING AND CLIMATE-SMART AGRICULTURE

The region has significant potential for maize, millet, sorghum, sweet potatoes, beans, and other high-temperature-surviving vegetables. Only a small portion of irrigable land is currently utilised, creating opportunities for investment in irrigation infrastructure, modern agro-practices, and climate-resilient farming systems.

II) AGRO-PROCESSING

Investment opportunities exist in food processing industries for maize, millet, beans, potatoes, and groundnuts. Additionally, oilseed processing for sunflower, sesame, and other locally grown crops can enhance potential investment within the region.

III) LIVESTOCK PRODUCTION AND IMPROVEMENT

The region's economy is heavily dependent on livestock farming; therefore, investment can potentially focus on improving cattle, goat, and sheep breeds by implementing ranching or zero-grazing systems and providing additional farming services training to local farmers.

IV) ANIMAL FEED PRODUCTION

To support livestock transformation, there is potential to develop facilities for producing animal feed, integrating crop production with feed processing, and introducing improved breeds for dairy and meat production.

V) CULTURAL AND ECO-TOURISM DEVELOPMENT

The Ohangwena has a rich cultural heritage, community-based conservancies, and cross-border tourism potential. Investment opportunities include eco-lodges, cultural centres, guided heritage tours, guesthouses, and craft

markets, capitalising on the growing interest in northern Namibia as a tourism corridor.

VI) CONSTRUCTION AND INFRASTRUCTURE

There are opportunities for construction of hotels, lodges, guesthouses, marketplaces, recreational facilities, and community infrastructure, supporting both tourism and local enterprise development.

VII) FORESTRY AND BEEKEEPING

Agroforestry and beekeeping initiatives can be developed in both public and private sectors, providing sustainable livelihoods, promoting honey and non-timber forest products, and enhancing rural income.

VIII) HEALTH SERVICES INVESTMENT

Opportunities exist to expand modern health care facilities, improve access to medical services, and integrate livestock and veterinary health services for holistic community development.

IX) RENEWABLE ENERGY AND WASTE-TO-ENERGY

Investment in solar, wind, and bioenergy projects, including waste-to-energy solutions, can support rural electrification and provide energy for industries and households.

X) REGIONAL MARKET CENTRES AND TRADE FACILITATION

Development of strategic market hubs in towns such as Oshikango, Eenhana, and Engela can support trade in crops, livestock products, and crafts, strengthening cross-border commerce with Angola and within Namibia.

PRIORITISED SECTORS FOR INVESTMENT OPPORTUNITIES



PRIORITISED SECTORS FOR INVESTMENT OPPORTUNITIES

Investment in Namibia is primarily governed by the Namibia Investment Promotion Act, 2016 (Act No. 9 of 2016), which provides the legal framework for promoting, facilitating, and protecting both domestic and foreign investments within the country³⁵. The MIME serves as the line ministry responsible for implementing this Act and ensuring that investment activities align with national development goals³⁶. Working under the strategic oversight of MIT, the Namibia Investment Promotion and Development Board (NIPDB) functions as the key custodian and facilitator of investment promotion, investor services, and national project coordination in the country³⁷.

“
The Ohangwena Investment Map strengthens Namibia’s national agenda by turning regional opportunities into engines of inclusive growth and industrialisation.”

Within this framework, regional initiatives such as the Ohangwena Investment Map play a crucial role in identifying and showcasing viable investment opportunities that correspond with Namibia’s National Development Priorities, including agricultural value-addition, renewable energy, MSME development, and cross-border trade infrastructure³⁸. This alignment ensures that investment promotion in Ohangwena contributes directly to the broader objectives of inclusive growth, industrialisation, and regional development as articulated in the country’s NDP6.

The Namibian Economy’s Performance by Industry

In 2024, the size of the Namibian economy as measured in nominal terms expanded by N\$16.2 billion, recording N\$245.1 billion from N\$228.9 billion recorded in the previous year³⁹. In real terms, the domestic economy slowed to a growth rate of 3.7%, compared to 4.4% recorded in 2023.

³⁵ Republic of Namibia. (2016). Namibia Investment Promotion Act, Act No. 9 of 2016. Windhoek: Government of the Republic of Namibia. <https://namibii.org/akn/na/act/2016/9/eng@2016-08-31/source.pdf>. Access 23 October 2025.

³⁶ Ministry of Industrialisation and Trade. (n.d.). Acts – Namibia Investment Promotion Act 2016 (Gazetted). https://mit.gov.na/acts/-/document_library/arcd/view_file/62612. Access 23 October 2025.

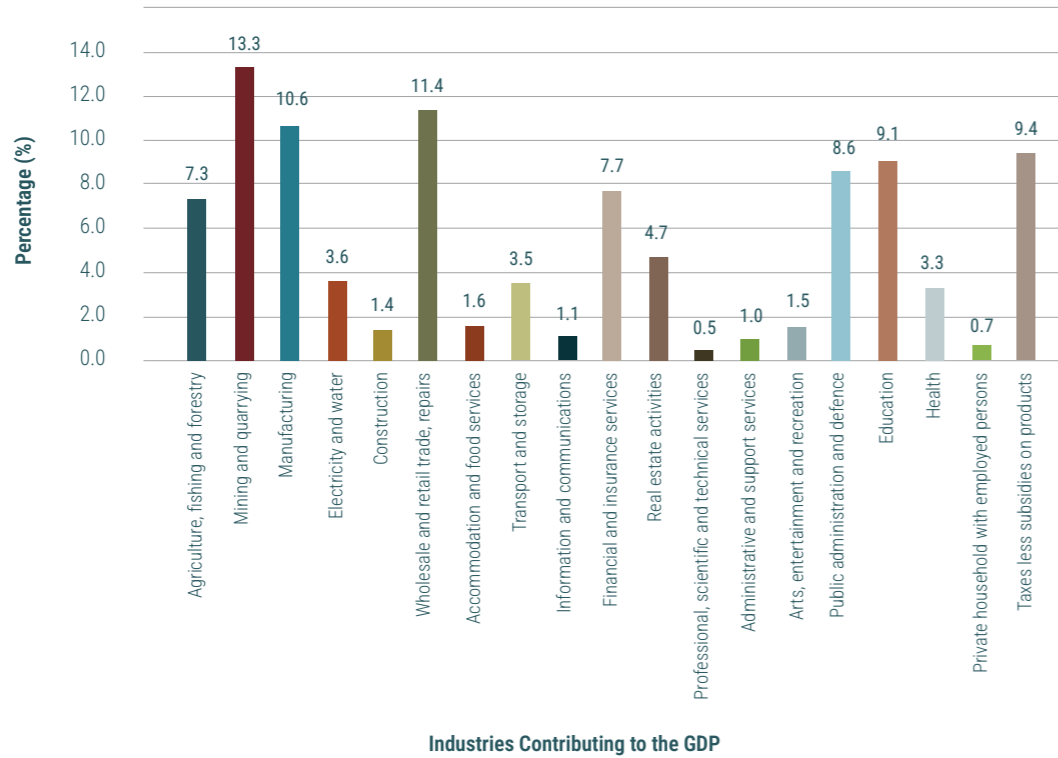
³⁷ Namibia Investment Promotion and Development Board (NIPDB). (2025). About / Executive Management. Retrieved from <https://www.nipdb.com>. Access 23 October 2025.

³⁸ National Planning Commission. (2025). Namibia Sixth National Development Plan (NDP6). Windhoek: Government of the Republic of Namibia. Retrieved from <https://www.npc.gov.na>.

³⁹ Namibia Statistics Agency. (2024). Annual national accounts 2024. <https://nsa.org.na/document/annual-national-accounts-2024>. Accessed 23 October 2025. pp.v



Fig. 6: Gross Domestic Product by Activity



Source: Author's Compilation, data sourced from the 2024 NSA Annual Report.

Based on Figure 6 above, the NSA 2024 national accounts data of Namibia's economy remain diversified, with Mining and Quarrying (13.3%), Manufacturing (10.6%), and Wholesale and Retail Trade (11.4%) being the largest contributors to Gross Domestic Product (GDP). These sectors form the backbone of industrial output and export earnings, while Education (8.6%), Private Households with Employed Persons (9.1%), and Real Estate Activities (7.7%) highlight the growing role of social and service-orientated industries in sustaining employment and income generation.

Despite its relatively moderate national contribution, agriculture, forestry and fishing (7.3%) remain vital for rural livelihoods and regional economies such as Ohangwena, where agricultural value-addition, agro-processing, and food systems development present strategic investment opportunities.

Sectors such as construction (3.6%), transport and storage (3.5%), and health (3.3%) also demonstrate potential for public-private investment synergies that align with the region's infrastructure and social service needs. The diversification reflected in these figures supports Ohangwena's investment strategy to leverage national growth drivers while promoting inclusive, regionally anchored development in line with Namibia's national priorities under the Namibia Investment Promotion Act, 2016 (Act No. 9 of 2016) and the NDP6.

3.1 MANUFACTURING SECTOR

3.1.1 National Overview

Namibia's manufacturing sector consists of a wide variety of companies involved in meat, grain, fish, and food processing; training; tanning and leatherwork; brewing; cement manufacturing; smelting and metal refining; and diamond cutting and polishing⁴⁰. Major manufacturers includes Meatco, Beefcor, Namib Mills, Bokomo, the Ohtlaver & List Group, Seawork Fish Processors, Namibia Breweries, Ohorongo Cement, Sinomine, and Namibia Diamond Trading Company (NDTC). The Namibia Manufacturers Association (NMA) is an umbrella body representing the interests of manufacturers.

Policy Direction 2025-2030: According to the NDP6, manufacturing aims to increase value addition, boost its GDP share to 18%, and create over 80,000 jobs by 2030.

3.1.2 Regional Overview

The Ohangwena Region possesses key enabling factors for the establishment and expansion of manufacturing activities. These factors include access to agricultural raw materials, an expanding electricity supply network, improving road infrastructure connecting to major trade corridors, and an abundant, young labour force. The region's proximity to Angola and its position within the Trans-Cunene Corridor further present strategic opportunities for cross-border manufacturing and trade development⁴¹.

Ohangwena's focus on the manufacturing sector development is guided by the objectives of Namibia's NDP6 and the SWAPO Party Manifesto, which emphasise industrialisation, regional value addition, and economic diversification. The following factors drive the strategic thrust:

- a) establishing manufacturing and EPZs**, especially in Eenhana and Helao Nafidi, to promote export-oriented industries and facilitate trade with Angola;
- b) developing manufacturing industries** that utilize locally and regionally produced raw materials, such as cotton, mahangu, livestock products, and forest-based resources;
- c) promoting manufacturing of mass-consumption goods** such as clothing, construction materials, and processed foods; and
- d) encouraging manufacturing industries** that generate both direct and indirect employment, contributing to inclusive growth through the value chain.

⁴⁰ Economy Namibia, Manufacturing, accessed (2025). <https://economy.com.na/manufacturing/>. Accessed 14 October 2025. [Online]
⁴¹ Namibia Statistics Agency (NSA). (2023). Ohangwena Regional Profile 2023. Windhoek: NSA

3.2 HEALTHCARE SECTOR

3.2.1 National Healthcare Overview

Namibia has a two-tier health system: public health under the Ministry of Health and Social Services (MoHSS) and the private health services. Namibia's health services are regulated by the Public and Environmental Health Act, 2015 (Act No. 1 of 2015)⁴², that ensures the promotion and maintenance of public health standards. MoHSS' vision is to be the leading provider of quality health care and social services according to international set standards. Namibia's health services under the MoHSS are structured along a three-tier hierarchy at national, regional, and district levels. These services are accessed by 85% of the Namibian population, often the lower-income population. According to the Deutsche Gesellschaft für Internationale Zusammenarbeit (GIZ, 2023) study, there are 844 private health facilities, 557 medical practitioners, and 75 pharmacies, as well as specialty and general private hospitals and private clinics. The majority of the private health facilities are based in urban areas while there is a lack rural-based facilities.

Policy Direction 2025-2030: Healthcare targets universal coverage and improved outcomes, with specific goals to reduce maternal/child mortality and enhance health facilities. The SWAPO Party Manifesto Implementation Plan 2025-2030 seeks to improve access to and quality of healthcare services for all Namibians. The implementation plan will focus on expanding healthcare infrastructure and facilities while also addressing human resource gaps. The objectives include building or upgrading 8 intermediary hospitals and 85 primary health care facilities annually. Public-private partnerships are envisaged in terms of funding, building and operating.

3.2.2 Regional Healthcare Overview

The Ohangwena Region's healthcare system forms a critical foundation for human capital development and investment in social infrastructure. As of 2025, the region has a network of 3 hospitals, 22 health centres, 31 primary health care clinics, and 144 outreach service points, owned and operated by government, faith-based organisations, and private entities. The government actively encourages private sector participation to expand access and improve service quality⁴³.

The major facilities include Engela District Hospital, the second-largest maternity hospital in Namibia, delivering 300–400 babies monthly, and Okongo District Hospital, which is currently being upgraded to improve inpatient services⁴⁴.

⁴² Public and Environmental Health Act, 2015 (Act No. 1 of 2015). Republic of Namibia. (2015). Public and Environmental Health Act, 2015 (Act No. 1 of 2015). Windhoek: Government of the Republic of Namibia. <https://namibii.org/akn/na/act/2015/1/eng>

⁴³ Namibia Statistics Agency. (2024). Ohangwena Regional Profile: Population, Agriculture, and Infrastructure. Windhoek: NSA. Retrieved from <https://nsa.org.na/wp-content/uploads/2024/08/ohangwena-region-profile.pdf>. Accessed 18 October 2025.

⁴⁴ New Era. (2025). Ohangwena earmarks health facilities for upgrades. Windhoek. Retrieved from <https://neweralive.na/ohangwena-earmarks-health-facilities-upgrades>. Accessed 18 October 2025.

3.2.3 Healthcare Ownership Regulations

The ownership and licensing of a private health facility is guided by the Hospital and Health Facilities Act of 1994⁴⁵ and provides eligibility criteria for operating a private health facility. The Act regulates the following:

- **Licensing and registration of health facilities**
- **Ownership and Eligibility**
- **Standards of Operation**
- **Offences and Penalties**
- **Regulatory Oversight**

OPPORTUNITIES FOR SPECIALIZED SERVICES

Namibia is an ideal investment destination for health practitioners. With a stable political environment, the government policies and legislation have created a conducive business environment for foreign direct investment. The existence of excellent roads, infrastructure, and networks makes it easy for companies to operate in the country⁴⁶. The country has a well-established, robust private health sector; however, this is skewed towards urban areas. There is a growing middle-class population in the rural areas, with inadequate medical facilities. This provides a potential market for high-class medical facilities in the regions.

There are at least eight key areas that can serve as investment opportunities in Namibia:

- **E-health**
- **Medical goods and equipment**
- **Pharmaceuticals**
- **Health infrastructure**
- **Laboratory services**
- **Specialised services**
- **Medical education**

Table 3: Namibia's Specialized Services

	Public Sector	Private Sector
Intensive Care Units (ICU)	18 beds (at Windhoek Central Hospital (8), Oshakati Intermediate Hospital (6) and Onandjokwe State Hospital (4))	67 beds (mostly in Windhoek or in the Northern area)
Nephrology	The public sector lacks the necessary capacity to provide kidney analysis. Dialysis is offered in two public hospitals No kidney transplantation services in the public sector—all patients are referred to South Africa	Adequate; public patients are referred to private sector, but costs per patient were found to be very high (NAD 3000/ ca. 168 Euro)

⁴⁵ Republic of Namibia. (1994). Hospital and Health Facilities Act, 1994 (Act No. 36 of 1994). Windhoek: Government of the Republic of Namibia. <https://namibii.org/akn/na/act/1994/36/eng>

⁴⁶ Business Scout for Development, Sector Namibia: Health (n.d.). Legal Assistance Centre, <https://www.lac.org.na/laws/annoSTAT/Hospitals%20and%20Health%20Facilities%20Act%2036%20of%201994.docx>

	Public Sector	Private Sector
Cardiac surgery	There are limited resources to provide optical cardiac surgery—therefore, collaboration with South African hospitals is necessary. The first open-heart surgery was performed in Namibia in 2008	
Ophthalmology and audiology	One audiologist and shortage of eye doctors	Limited number of optometrists, but adequate number of audiologists
Orthopaedists and neurosurgeons	Good service	Good service Due to the high number of car accidents and injuries, patients are often referred to private hospitals.
Mental health	No detoxification unit available Two mental health centres provide treatment	Provide curative and preventative services

Source: Deutsche Gesellschaft für Internationale Zusammenarbeit (GIZ, 2023)

Table 4: Ohangwena investment opportunities

Opportunity Area	Key Features/Potential	Target Areas	Current State	Investment Rationale	Policy Support
Construction of Health Facilities	Build hospitals, health centres, and dispensaries to expand access and meet growing demand	Engela, Okongo, Eenhana, Oshikango	Existing facilities insufficient and overstretched	To improve access to quality care, reduce patient travel time	NDP6 priorities, SWAPO Party Implementation Plan,
Medical Supplies Manufacturing	Production of drugs, consumables, and medical equipment locally	Regional and local markets	High reliance on imported medical supplies	Reduce import dependency, strengthen local value chains	The MIME support, investment incentives
Health Insurance Services	Provision of healthcare insurance products to individuals and corporate clients	Regional and local markets	Limited private insurance coverage	Improve affordability and access to healthcare	MoHSS - Public and Environmental Health (Act No. 1 of 2015) and frameworks, NDP6 policy alignment

Source: Deutsche Gesellschaft für Internationale Zusammenarbeit (GIZ, 2023)

⁴⁷ Public and Environmental Health Act, 2015 (Act No. 1 of 2015). Republic of Namibia. (2015). Public and Environmental Health Act, 2015 (Act No. 1 of 2015). Windhoek: Government of the Republic of Namibia. <https://namibii.org/akn/na/act/2015/1/eng>



3.3 AGRICULTURAL SECTOR

3.3.1 National Overview

Agriculture is one of Namibia’s most important sectors, with the majority of Namibia’s population dependent directly or indirectly on the agricultural sector for their livelihoods.

- Agriculture’s contribution to the country’s gross domestic product (GDP) (excluding fishing) over the last five years has been just over 4%.
- Livestock farming constitutes approximately two-thirds of agricultural production, with crop farming and forestry making up the remaining third⁴⁸.



Policy Direction 2025-2030: According to the NDP6, goals include achieving climate-smart value chains and increasing the sector’s GDP contribution to 8% by 2030, alongside producing 80% of national food domestically. The Cabinet approved the SWAPO Party Manifesto Implementation Plan (2025-2030), which aims to transform Namibia into a food-secure nation by significantly enhancing agricultural productivity and empowering farmers. We will achieve this through a multi-pronged private-public-partnership approach that involves expanding farmland and developing large-scale farming operations.

3.3.2 Regional Agricultural Overview

The Ohangwena region is one of the four “Central North” political regions. About half of Namibia’s population lives in the Central North, and compared to the rest of the country, the population density is relatively high. The region borders Angola to the north, the Kavango West Region to the east, the Kunene Region to the west, and Etosha National Park to the south. The landscape is predominantly agricultural and wood product resource-rich, rather than wildlife management.

Agriculture remains the backbone of Ohangwena’s economy, contributing significantly to household income and employment. The majority of the region’s population is engaged in crop and livestock farming mainly for subsistence, but with strong potential for commercial transformation⁴⁹. The region’s semi-arid climate supports a variety of drought-resistant crops, while ongoing government efforts to expand irrigation and storage capacity aim to enhance productivity⁵⁰.

CROP PRODUCTION

Crops commonly grown include maize, millet, sorghum, beans, groundnuts, cowpeas, sweet potatoes, and cassava, alongside limited horticultural crops such as tomatoes, onions, melons, and leafy vegetables. Strategic crops for the region include mahangu (pearl millet), maize, sorghum, groundnuts, and vegetables, which are vital for food security and market trade⁵¹.

⁴⁸ International Trade Administration, Namibia - Agricultural Sector, U.S. Department of Commerce, (2024), <https://www.trade.gov/country-commercial-guides/namibia-agricultural-sector>. Accessed 12 September 2024.

⁴⁹ Ministry of Agriculture, Water and Land Reform. (2023). Agricultural Investment Opportunities in Northern Namibia. Windhoek: Government of Namibia. <https://www.mawlr.gov.na>. Accessed 18 October 2025.

⁵⁰ Ministry of Industrialisation and Trade. (2023). Investment Promotion Strategy for the Northern Regions of Namibia. Windhoek: Government of Namibia. Retrieved from <https://www.mti.gov.na>. Accessed 18 October 2025.

⁵¹ Food and Agriculture Organization (FAO). (2022). Namibia Country Programming Framework 2022–2026. Windhoek: FAO Namibia. <https://www.fao.org/namibia>. Accessed 18 October 2025

Ohangwena has an estimated 250,000 hectares of arable land, yet only a fraction is fully utilised, indicating vast untapped potential for agricultural expansion. Investment in modern farming systems, irrigation infrastructure, and value addition is therefore a top priority⁵². Stakeholders are welcome to invest either jointly with the Government or privately in the following:

- **Commercial crop farming.**
- **Strengthening agricultural extension services.**
- **Supply and distribution of agricultural inputs.**
- **Irrigation infrastructure development.**
- **The construction of post-harvest and logistics facilities is underway.**
- **Quality seed production and multiplication.**
- **Establish agro-processing industries.**
- **Market access and information systems.**
- **Ohangwena Aquifer water supply potential**

RAINFALL

The Ohangwena region, located in the northeastern part of Namibia, receives rainfall ranging from 500 to 600 millimetres per year. In non-desert regions (north and east), it rains in summer, from November to March⁵³. This climate is favourable for subsistence farming in the region especially for those that intend to go commercially, by selling to agri-businesses and local market such as Agro-Marketing and Trade Agency (AMTA).

INSTITUTIONAL SUPPORT

The Ministry of Agriculture, Fisheries, Water, and Land Reform is the key policy-making institution for the industry⁵⁴. Namibia’s most recent agriculture policy was published in 2015. The MAFWLR aims to promote agricultural development and oversees a number of public agencies:

- The Agricultural Bank of Namibia (Agribank) provides finance to commercial and communal farmers, including for the Affirmative Action Loan Scheme, which is designed to help larger communal farmers purchase commercial land and become fully-fledged commercial farmers.
- The Meat Board of Namibia, a commercial public enterprise, regulates and promotes the meat industry.
- The Namibian Agronomic Board (NAB) regulates and promotes the agronomic industry, including import controls for controlled grains (maize, wheat, and mahangu), regulates grain processors, and implements the National Horticulture Development Initiative,

- which encourages greater domestic production of fruit and vegetables primarily for domestic consumption.
- AMTA aims to promote food security, facilitate trade and storage, promote value addition, and encourage local consumption.
- The Agricultural Trade Forum is a membership organisation that provides a structure for dialogue between the government and the private sector on agricultural trade issues.
- AGRIBUSDEV was created to run the government’s Green Scheme, but it is currently being wound up. The Karakul Board oversees Namibia’s karakul industry.

52 Namibia Statistics Agency. (2024). Ohangwena Regional Profile: Population, Agriculture, and Infrastructure. Windhoek: NSA. Accessed 18 October 2025.
 53 "ibid"
 54 "ibid"

MAHANGU AND GRAIN VALUE CHAIN DEVELOPMENT

Ohangwena Region is one of Namibia’s leading producers of mahangu (pearl millet), a staple food crop in the northern communal areas and a critical component of household food security⁵⁵. The region’s semi-arid climate and sandy soils are particularly suited for mahangu production, which is grown widely alongside maize, sorghum, and groundnuts⁵⁶.

The average yield of mahangu in Ohangwena currently ranges between 400 and 600 kg/ha, depending on rainfall and seed variety⁵⁷. However, with improved seed quality, mechanization, and irrigation systems, productivity could be significantly increased to over 1,200 kg/haAMA.

The region’s agricultural development plans therefore prioritise:

- The modernisation of grain production,
- Value addition through small-scale milling, storage, and packaging industries⁵⁸.

At present, production levels in Ohangwena remain below regional consumption and processing capacity, creating opportunities for investment in the full grain value chain, from cultivation to market. The regional target under Namibia’s Agricultural Growth and Investment Strategy is to double mahangu and maize production by 2030, which would substantially reduce grain imports from other regions and neighbouring countries⁵⁹.

To achieve this, investment is required in:

- Agricultural extension services and mechanisation support.
- Supply of certified drought-tolerant seed varieties and fertilisers.
- The establishment of community grain processing and packaging facilities is underway.
- Development of small- and medium-scale storage silos and milling plants in rural constituencies.
- Strengthening market access and distribution networks across the Namibia–Angola border, particularly through the Omafo and Oshikango trade corridors.

LIVESTOCK DEVELOPMENT

The livestock sector plays a crucial role in the economy of the Ohangwena Region, providing income, food security, and employment to a large share of the population⁶⁰. Livestock rearing particularly cattle, goats, sheep, and poultry is the second most important livelihood activity after crop production. The sector has strong potential for commercial expansion, value addition, and cross-border trade, especially given the region’s proximity to Angola and access to transboundary markets through the Oshikango and Omafo border posts⁶¹.

55 Namibia Statistics Agency. (2024). Ohangwena Regional Profile: Population, Agriculture, and Infrastructure. Windhoek: NSA. <https://nsa.org.na/wp-content/uploads/2024/08/ohangwena-region-profile.pdf>. Accessed 18 October 2025.
 56 Ministry of Agriculture, Water and Land Reform. (2023). Agricultural Investment Opportunities in Northern Namibia. Windhoek: Government of Namibia. <https://www.mawlr.gov.na>
 57 Food and Agriculture Organization (FAO). (2022). Namibia Country Programming Framework 2022–2026. Windhoek: FAO Namibia. <https://www.fao.org/namibia>. Accessed 18 October 2025
 58 Ministry of Industrialisation and Trade. (2023). Investment Promotion Strategy for the Northern Regions of Namibia. Windhoek: Government of Namibia. Retrieved from <https://www.mti.gov.na>. Accessed 18 October 2025.
 59 Namibia Statistics Agency. (2024). Ohangwena Regional Profile.
 60 Namibia Statistics Agency. (2024). Ohangwena Regional Profile: Population, Agriculture, and Infrastructure. Windhoek: NSA.
 61 Ministry of Industrialisation and Trade. (2023). Investment Promotion Strategy for the Northern Regions of Namibia. Windhoek: MIT.

“
 From field to market, Ohangwena offers untapped potential across the entire grain value chain – from cultivation and storage to processing and trade.”

The livestock population in Ohangwena is largely dominated by indigenous breeds such as the Sanga cattle and local goat and sheep varieties, which are well-adapted to the semi-arid conditions and resistant to common diseases⁶². However, productivity remains low due to traditional free-range grazing, limited access to water and veterinary services, and poor market linkages. The region's livestock development plan therefore emphasizes ranching systems, livestock improvement, and the establishment of processing facilities for meat, milk, hides, and skins.

PREVAILING INVESTMENT OPPORTUNITIES IN THE LIVESTOCK INDUSTRY

Investment prospects in the industry include:

- **The area is home to dairy production and milk processing plants.**
- **Meat processing and packaging plants.**
- **Animal feed and forage production.**
- **Leather and hide processing facilities**
- **Poultry hatcheries and broiler operations.**
- **Veterinary service centres and breeding programmes.**
- **A shift from free-range livestock keeping to semi-intensive and ranching models is being encouraged by regional authorities to improve productivity and sustainability⁶³.**

3.4 TOURISM

3.4.1 National Overview

Namibia is a large, sparsely populated, and beautiful country endowed with breathtaking landscapes. This industry caters to a wide variety of tastes, from high-end fly-in safari tourism to self-drive tourists and backpackers. Over 46.8% of Namibia's surface area is under conservation management; this includes national parks and reserves, communal and commercial conservancies, community forests, and private nature reserves⁶⁴.

Namibia has 20 state-run protected areas covering about 18% of the country's land area, including three trans-frontier parks. Post COVID-19, Namibia attracted almost 1.6 million tourists: 1.2 million from Africa (mostly Angola and South Africa), 256,000 from Europe, and 89,000 from the rest of the world⁶⁵.

Several laws, policies, and strategy documents guide Namibia's tourism sector. Most of them are under the custodianship of the Ministry of Environment, Forestry and Tourism (MEFT), and the rest fall under different government Offices, Ministries, and Agencies (OMAS).

The ministry is the key policy-making institution for the industry, headed by the Minister of Environment, Forestry, and Tourism, since March 2025, the Honourable Indileni Daniel. Tourism is the responsibility of the Directorate of Tourism and Gaming. There has been no explicit tourism policy since the National Policy Framework on Tourism for Namibia of 2009⁶⁶.

⁶² Food and Agriculture Organization (FAO). (2022). Namibia Country Programming Framework 2022–2026. Windhoek: FAO Namibia.

⁶³ Ministry of Agriculture, Water and Land Reform. (2023). Agricultural Investment Opportunities in Northern Namibia. Windhoek: MAWLR

⁶⁴ Namibia Investment Promotion and Development Board. (2025, June). The Opportunity Catalogue 2024/25. Retrieved October 12, 2025, from https://consulnamib.pt/wp-content/uploads/2025/06/1496-TC-NIPDB-The-Opportunity-Catalogue-2024_25-FINAL-pages.pdf. Accessed 12 October 2025. pp.69

⁶⁵ Ministry of Environment and Tourism (Namibia). (2024). Tourist Statistical Report 2023. Retrieved from <https://www.meft.gov.na/files/files/TOURIST%20STATISTICAL%20REPORT%202023.pdf>. Accessed 23 October 2025.

⁶⁶ The Online Guide to the Namibian Economy. (n.d.). Tourism. <https://economy.com.na/tourism/>. Accessed 12 October 2025. [Online]



Regulation of tourism accommodation and operators is carried out by the Namibia Tourism Board, financed out of levies on the industry. The government is directly involved in the industry through a commercial public enterprise, Namibia Wildlife Resorts, which owns and operates 22 tourist resorts and camping sites around the country. The Ministry publishes annual tourism arrival statistics and also periodic tourism satellite accounts, which quantify the tourist industry's direct and indirect contribution to the economy.

The vast majority of Namibia's private tourist companies are small, individually or family-owned businesses. Accommodation establishments ranging from campsites, self-catering, and B&Bs to guest farms, guesthouses, and hotels constitute the largest share of tourist businesses. The rest of the industry consists of vehicle rental operators, tour and safari operators, trophy hunters, tour facilitators, shuttle and transport operators, conference centres, booking agents, air charter operators, and activity operators. Larger Namibian tourism businesses include Gondwana, the Ohlthaver & List Group, and NamibRand Nature Reserve.

Namibia has been a pioneer in community-based tourism. The Namibian Association of Community-Based National Resource Management Support Organisations (NACSO) puts the number of communal conservancies at 86, covering an area of 169,756m² and involving 223,000 people. Namibia also has 43 registered community forests, which cover 72,537m². Community-based tourism activities include hunting, crafts, campsites, trophy hunting, and joint-venture tourism.



Policy Direction 2025-2030: According to the NDP6, the goal seeks integrated and sustainable growth, aiming to increase annual arrivals to 1.8 million and its GDP contribution to 5% by 2030.

3.4.2. Regional Overview

The Ohangwena Region has a variety of natural scenery, cultural history, and special ecological features that offer great chances for investment in ecotourism, cultural tourism, and nature-based businesses. The region's natural endowments include its wooded savannahs, seasonal rivers, aquifers, and wetlands, which sustain wildlife species such as antelope, kudu, warthog, and various bird species adapted to the Cuvelai Basin ecosystem⁶⁷.

The region's tourism potential remains largely untapped, with most visitors currently passing through to northern and northeastern Namibia. However, Ohangwena's cultural richness, traditional homesteads, and craftsmanship, particularly its basket weaving, pottery, and traditional music, offer a solid foundation for the growth of community-based tourism and heritage attractions⁶⁸.

⁶⁷ Namibia Statistics Agency. (2024). Ohangwena Regional Profile: Population, Agriculture, and Infrastructure. Windhoek: NSA. Retrieved from <https://nsa.org.na/wp-content/uploads/2024/08/ohangwena-region-profile.pdf>. Accessed 18 October 2025.

⁶⁸ Ministry of Agriculture, Water and Land Reform. (2023). Agricultural Investment Opportunities in Northern Namibia. Windhoek: Government of Namibia. Retrieved from <https://www.mawir.gov.na>. Accessed 18 October 2025.

3.4.3 Opportunities on critical subsectors

Investment in tourism can be found regionally through cultural tourism, which showcases the region's landscape, diversity, traditions, heritage, and natural beauty to a global audience. Sport and adventure tourism also present opportunities.

Investment opportunities exist across six (6) areas, namely

- **Community/cultural-based tourism**
- **Circuit development/route development model**
- **Luxury affordability (Hotel)**
- **Meetings, incentives, conferences and event tourism (MICE)**
- **Medical tourism**
- **Retail tourism**

3.4.4 Eco-Cultural and Heritage Tourism

Investment in eco-cultural and heritage tourism can leverage Ohangwena's cultural and natural endowments to diversify the regional economy and generate local employment. The region features several cultural villages and traditional homesteads, such as those found near Eenhana and Helao Nafidi, which reflect the heritage and customs of the Ovakwanyama people. The Eenhana Shrine, a national heritage site established to honour Namibian liberation struggle heroes, remains a focal point for cultural and memorial tourism⁶⁹.

The Namibia Tourism Board and the MEFT have prioritised northern Namibia as a tourism growth zone, supporting efforts to develop sustainable, inclusive tourism ventures that integrate conservation and community benefits. The establishment of conservancies, such as the Ohaingu and Omufitu waNauyala Community Forests, aligns with national policies on sustainable land use and biodiversity management⁷⁰.

3.4.5 Conservancy

Okongo Conservancy

The Okongo Conservancy, located in the eastern part of the Ohangwena Region, encompasses approximately 5,000 hectares of designated wildlife core area. The conservancy's ecological and economic role is significant due to its strategic biodiversity base and its potential for CBNRM initiatives. It is jointly managed by the Ministry of Environment, Forestry and Tourism (MEFT) and the Okongo Conservancy Management Committee, ensuring a balance between ecological sustainability and local socio-economic benefit⁷¹.

Its main goal is to enhance biodiversity and promote sustainable conservation of both translocated and naturally occurring species within the Cuvelai Basin ecosystem⁷².

⁶⁹ Ministry of Industrialisation and Trade. (2023). Investment Promotion Strategy for the Northern Regions of Namibia. Windhoek: Government of Namibia. <https://www.mti.gov.na>

⁷⁰ Food and Agriculture Organization (FAO). (2022). Namibia Country Programming Framework 2022–2026. Windhoek: FAO Namibia. <https://www.fao.org/namibia>. Accessed 18 October 2025.

⁷¹ Ministry of Environment, Forestry and Tourism (MEFT) & Okongo Conservancy Management Committee. (2025). Game Count Statistics: Okongo Conservancy 2022/2024 FY. Windhoek: MEFT.

⁷² "Ibid"



Wildlife-Based Economic Potential

The wildlife population diversity within the Okongo Conservancy supports a variety of economic opportunities such as eco-tourism, sustainable game utilisation, and community employment. The conservancy’s wildlife core area hosts naturally occurring species, including Steenbok, Duiker, Vervet Monkey, Wild Dog, Jackal, Warthog, Leopard, and Cheetah, with occasional elephants migrating from the Kavango–Zambezi Transfrontier Conservation Area (KAZA-TFCA)⁷³.

Game Population Trends and Growth (2022-2025)

According to the September 2025 game count, the Okongo Conservancy’s wildlife population demonstrates an upward growth trend since the 2021–2022 reporting period, particularly among zebra, eland, and kudu populations⁷⁴.

Table 5: Game population estimate comparison (2022-2024)

Species	2022 Estimate	2024 Estimate	Change (%)
Eland	42	55	+30.9%
Kudu	28	36	+28.6%
Giraffe	5	7	+40.0%
Roan Antelope	6	8	+33.3%
Plains Zebra	12	19	+58.3%
Steenbok & Duiker (combined)	20	25	+25.0%

Source: Game Count Statistics, Okongo Conservancy (2025)

This increase reflects effective wildlife management practices, natural reproduction, and favourable climatic conditions associated with the Cuvelai Basin’s seasonal hydrological regime, which supports vegetation growth and water availability for wildlife.

Economic Linkages and Community Benefits

The economic benefits derived from Okongo Conservancy include:

- Employment opportunities** for community rangers, guides, and conservancy staff.
- Income generation**, through sustainable trophy hunting quotas and wildlife-based tourism.
- Community development funds** are reinvested into local infrastructure, water points, and education initiatives.
- Biodiversity conservation value**, positioning the conservancy as an ecological asset that complements Ohangwena’s broader investment framework in tourism and natural capital.

Okongo’s wildlife core area also contributes indirectly to ecosystem services such as carbon sequestration, soil fertility enhancement, and grazing management, which support both conservation and agriculture in the region.

⁷³ Ibid
⁷⁴ Ibid

Strategic Investment Significance

The Okongo Conservancy forms an integral part of Ohangwena's eco-economy and aligns with Namibia's National CBNRM Programme, making it a suitable platform for green investment and sustainable tourism infrastructure development. Such opportunities can be enhanced through:

- Development of eco-lodges or community campsites.
- Establishment of wildlife-based value chains (crafts, hides, cultural products).
- Carbon offset projects linked to land restoration and habitat conservation.
- Wildlife monitoring and research partnerships with universities and conservation NGOs.

These initiatives would not only enhance rural income but also strengthen Ohangwena's positioning within Namibia's nature-based economic corridor.

3.5 CREATIVE INDUSTRY

3.5.1 National Overview

Namibia's rich cultural heritage and growing entertainment industry provide film, music, fashion and art more opportunities. The cultural and creative industries (CCIs) represent a highly influential sector of the Namibian economy. Based on the NSA annual report of 2023, art, entertainment and other service activities contributed 1.5% to the Namibian GDP in 2022 and 2023⁷⁵. The expansion of digital platforms has opened up international markets, creating new revenue streams for local artists and content creators.

KEY PLAYERS

The Namibia Arts Association (NAA), the Namibia Film Commission (NFC), and the National Heritage Council of Namibia (NHCN) comprise Namibia's creative and cultural industry. They play a vital role in Namibia's economic development, cultural preservation, and artistic expression. Below are their key functions:

i) Namibia Film Commission

The NFC attracts filmmakers through incentives, streamlining permitting processes and promoting diverse landscapes.

ii) National Heritage Council of Namibia

The NHCN preserves Namibia's cultural heritage, managing historical sites, protecting artefacts and documenting traditional practices.

iii) Namibia Arts Association

The NAA organises exhibitions, festivals, and workshops that allow artists to showcase their work and develop their skills.

Collectively, these organisations contribute to Namibia's cultural heritage preservation, artistic expression, skill development, cultural exchange, and the creation of a supportive ecosystem.

⁷⁵ Namibia Statistics Agency. (2025). Annual national accounts 2024. https://nsa.org.na/wp-content/uploads/2025/03/ANNUAL-NATIONAL-ACCOUNTS-2024.pdf?utm_source=chatgpt.com. Accessed 29 October 2025. Table F. pp.22



Policy direction 2025 -2030: According to the NDP6⁷⁶, the goal seeks to increase the contribution of arts, entertainment and recreation to Gross Domestic Product (GDP) from 1.5% to 3%. In addition, percentage share of arts, entertainment and recreation is targeted to improve employment from 0.7% to 2% by 2030. Similarly, the SWAPO Party Manifesto Implementation plan⁷⁷ seeks to strengthen existing Institutions (National Arts Gallery, Academy of Arts, department of Arts, Films Commission, and Music at UNAM). These aim at increasing production of locally created art, music, and visual content, resulting in growth in employment opportunities within the creative industry in Namibia.

3.5.2 Regional Overview

Integrating the CCIs in both rural and urban areas could unlock this sector and bring tremendous growth to the Ohangwena region, especially considering it is the 2nd highest populated region, given its youthful population in the country. Based on the NSA 2019/20 Ohangwena region's business profile report, much of Ohangwena's distribution establishment by economic activities is primarily concentrated in the service-orientated sector⁷⁸. With accommodation and food services (64%), followed by wholesale and retail trade (20.8%). Surprisingly, art, entertainment, and recreation only accounted for 0.3%, marking it as the lowest. In reference to the above, the region's directorate of education, arts, and culture has introduced entrepreneurship training for artists, artisans, and cultural producers to enhance local creative capacity⁷⁹. Moreover, the Ohangwena Regional Council has also integrated cultural and creative enterprise development into its local economic strategies, supported by national youth funding mechanisms such as the Namibia Youth Fund, which allocated N\$257 million toward youth-led enterprises in creative and cultural sectors.

3.5.2 Projects and opportunities



i) The Ohangwena Series TV Project

This three-year project is a high-impact television and creative-industry initiative rooted in Northern Namibia's liberation history and community resilience. The project unites film production, reforestation, youth employment, and tourism infrastructure, transforming the Ohangwena Region into a model for sustainable creative development.



ii) Film and Audio-Visual Production

Establishing small-scale studios and post-production facilities that can support local storytelling and cultural documentaries aligns with NDP6's goal to expand Namibia's film and media economy⁸⁰.

⁷⁶ National Planning Commission. (2025). Namibia's Sixth National Development Plan (NDP6) Policy Document. <https://www.npc.gov.na/wp-content/uploads/2025/07/NDP6-Policy-Documents-compressed.pdf>. Accessed 29 October 2025. pp. 123

⁷⁷ SWAPO Party. (2025). SWAPO manifesto implementation plan. Economy.com.na. <https://economy.com.na/wp-content/uploads/SWAPO-Manifesto-Implementation-Plan.pdf>. Accessed 29 October 2025. pp. 36

⁷⁸ Namibia Statistics Agency. (2023). Ohangwena Regional Profile. Windhoek: Government of the Republic of Namibia. Retrieved from <https://nsa.org.na/document/ohangwena-regional-profile>. Accessed 29 October 2025. pp.22

⁷⁹ FlyNam. (2025). Empowering Enterprise in Ohangwena. <https://flynam.com/empowering-enterprise-in-ohangwena/>. Access 29 October 2025.

⁸⁰ Consulate of Namibia in Portugal. (2025). NDP6 Integrated Monitoring and Evaluation Plan (IMEP). Retrieved from <https://consulnamib.pt/wp-content/uploads/2025/07/NDP6-IMEP.pdf>. Accessed 29 October 2025.

-  **iii) Craft, Fashion, and Design Enterprises**
Building value chains for traditional crafts, textiles, and fashion, leveraging local skills and targeting regional export markets, stimulating SMEs⁸¹.

-  **iv) Music Production and Creative centres**
Creating accessible recording studios, rehearsal spaces, and cultural hubs to empower youth in music and performing arts, supported by NIPDB's entrepreneurship facilitation.

INVESTMENT CLIMATE AND FACILITATION



⁸¹ Namibia Investment Promotion and Development Board (NIPDB). (2025). Creative Industry Sectoral Opportunities Brief. Windhoek: NIPDB. Retrieved from <https://nipdb.com/investment-opportunities/>

INVESTMENT CLIMATE AND FACILITATION

4.1 SUPPORTIVE POLICIES AND LEGAL ENVIRONMENT

National policies, regulatory frameworks, strategies, and plans provide a strong enabling environment for investment in the Ohangwena Region. These instruments align with Namibia's long-term development vision and the government's renewed focus on regional industrialisation, manufacturing, and cross-border trade enhancement with Angola.

At the national level, key guiding frameworks include:

- • **Sixth National Development Plan 2025–2030 (NDP6),**
- **SWAPO Party Manifesto Implementation Plan (SMIP),**
- **Namibia's Industrial Policy,**
- **Growth at Home Strategy,**
- **National Integrated Resource Plan (NIRP) 2022,**
- **Business and Intellectual Property Authority Act 8 of 2016**
- **The National Industrial Policy (2021-2030)⁸²,**
- **The Namibia Industrialisation, Trade and SME Development Policy (2021),**
- **The National Agriculture Policy (2022),**
- **The Energy Policy (2023) and,**
- **The Namibian Green Industrialisation Strategy (2023-2030).**

These policies work together to boost industrial growth led by the private sector, promote sustainable investments, and support innovation through value chains focused on exports.

In accordance with Namibia's Vision 2030 and the NDP6, which succeeds NDP5, emphasis is placed on improving regional competitiveness, advancing rural industrialisation, and supporting inclusive economic transformation⁸³. The SWAPO Party Manifesto (2024-2029)⁸⁴ further reinforces this agenda by prioritising healthcare, infrastructure development, youth employment, and value addition in the sectors such as agriculture and manufacturing, particularly within the northern region including Ohangwena.

⁸² Namibia's Industrial Policy: https://ntf.org.na/wp-content/uploads/Resource%20Center/Policies/Namibian_Industrial_Policy.pdf. Accessed 20 October 2025.

⁸³ National Planning Commission (NPC). (2025). Sixth National Development Plan (NDP6): Towards Inclusive Growth and Industrial Transformation. Windhoek: Government of Namibia.

⁸⁴ SWAPO Party Manifesto 2024–2029: <https://d4f7y6nbupj5z.cloudfront.net/wp-content/uploads/2024/09/Swapo-Manifesto-compressed.pdf>. Accessed 20 October 2025. 14-25

Major laws and frameworks governing investment promotion and economic activity in the Ohangwena Region include:

- • **The Public-Private Partnership Act (2017),**
- **The Environmental Management Act (2007),**
- **The Labour Act (No. 11 of 2007),**
- **The Local Authorities Act (1992),**
- **The Regional Councils Act (1992) and,**
- **The Public Procurement Act (2015).**

These legislative instruments are supported by operational regulations issued under:

- • **The Ministry of International Relations and Trade (MIRT),**
- **Ministry of Industries, Mines and Energy (MIME),**
- **The Namibia Investment Promotion and Development Board (NIPDB),**

Key national and regional strategies promoting investment include:

- • **The National Spatial Development Framework (2024),**
- **Industrial Upgrading and Modernisation Programme (IUMP),**
- **Namibia Logistics Hub Master Plan (2020–2030) and the Ohangwena Regional Development Plan (2023–2028), which outlines priority investment zones in Eenhana, Oshikango, and Okongo⁸⁵.**

These national and regional strategies align with broader national goals of infrastructure expansion, export diversification, and industrial cluster development.

Furthermore, supportive sector programs such as the Agriculture and Food Systems Transformation Strategy (2023–2028) and the Health Sector Strategic Plan (2022–2027) aim to strengthen linkages between primary production, agro-processing, and social infrastructure in the Ohangwena Region, thereby enhancing the region's overall investment attractiveness (Ministry of Agriculture, Water, and Land Reform [MAWLR], 2024; Ministry of Health and Social Services [MoHSS], 2025)⁸⁶.

The combination of these frameworks provides a predictable, stable, and competitive environment for both local and foreign investors, as underscored by Namibia's rule of law, regional integration under the SADC Industrialisation Strategy, and the AfCFTA framework, which further broadens access to regional and international markets⁸⁷.

“
National frameworks and sector strategies are creating a predictable, competitive environment that connects Ohangwena to regional and international markets.
”

⁸⁵ Ohangwena Regional Council. (2023). Ohangwena Regional Development Plan (2023–2028). Eenhana: Regional Council. Accessed 20 October 2025.

⁸⁶ Ministry of Agriculture, Water and Land Reform (MAWLR). (2024). Agriculture and Food Systems Transformation Strategy 2023–2028. Windhoek: Government of Namibia.

⁸⁷ Southern African Development Community (SADC). (2024). SADC Industrialisation Strategy and Roadmap Review Report. Gaborone: SADC Secretariat.



4.2 SPHERE OF GOVERNMENT

Namibia is a unitary state with three spheres of government, e.g., central, regional and Local Government⁸⁸.

Amount and Setting

Property rates are determined by local authorities, such as city or town councils, based on the value of the property. Each council sets its own rates, which can vary between municipalities.

Bulk water is supplied by NamWater and distributed by the local authorities on a cost recovery basis.

- Bulk power is supplied by NamPower and distributed by local authorities themselves and by Regional Electricity Distributors (REDs) in others. Between the Rongo RED (west), CENORED (north central and north-west) and NORED (northern and north-eastern), the RED covers more than half of all local authorities in Namibia.
- Local authorities provide all other services, such as waste removal, sanitation, disaster management, emergency services, stormwater management, etc., as per the Local Authorities Act 23 of 1992, Section 30.⁸⁹
- The Local Authorities Act No. 23 of 1992 establishes local authorities and gives them the power to set charges and fees for the services that they render. The Act allows the Minister of Regional and Local Government and Housing to divest local authorities of their function if, among other things, they do not determine and levy fees and charges adequately.
- Local authorities also set service charges for utilities. These charges often include a fixed monthly fee plus a variable component based on consumption. For instance, the City of Windhoek's electricity tariffs for the 2023/2024 period include basic charges and consumption rates⁹⁰.

4.3 MODE OF INVESTMENT

Investment opportunities in the Ohangwena Region can be pursued through:

- Individual private investments,
- Public-private partnerships (PPPs),
- Public-private-community partnerships (PPCPs) and joint ventures.

These investment modes align with Namibia's national development agenda as outlined in the NDP⁹¹ and the SWAPO Party Manifesto (2024-2029)⁹², which both emphasize inclusive growth, regional industrialization, and the empowerment of local entrepreneurs.

88 Western Cape Government. (2012). Setting tariffs: A guide for local government in South Africa, Namibia, and Botswana. Retrieved from <https://d7.westerncape.gov.za/text/2012/10/transparent-tariffs-setting-tariffs.pdf>. Accessed 21 February 2024. Pg 41.

89 Western Cape Government. (2012). Setting tariffs: A guide for local government in South Africa, Namibia, and Botswana. Retrieved from <https://d7.westerncape.gov.za/text/2012/10/transparent-tariffs-setting-tariffs.pdf>. Accessed 21 February 2024. Pg 41.

90 City of Windhoek. (2023). Electricity tariff book 2023/24. Retrieved from https://www.windhoekcc.org.na/wp-content/uploads/2023/12/electricity_tariff_book_2023_2024.pdf?utm_source=chatgpt.com. Accessed 21 February 2024.

91 National Planning Commission (NPC). (2025). Sixth National Development Plan (NDP6): Towards Inclusive Growth and Industrial Transformation. Windhoek: Government of Namibia.

92 SWAPO Party Manifesto 2024-2029: <https://d4f7y6nbupj5z.cloudfront.net/wp-content/uploads/2024/09/Swapo-Manifesto-compressed.pdf>. Accessed 20 October 2025.



Public-Private Partnerships (PPPs):

The PPP model in Namibia provides a strategic mechanism to blend public and private capital and expertise for infrastructure and service delivery. Guided by the Public-Private Partnership Act (Act No. 4 of 2017), the framework facilitates collaboration between government and private entities in areas such as renewable energy, healthcare, manufacturing, and logistics.

In Ohangwena, such partnerships can support projects like industrial parks, agro-processing facilities, and healthcare infrastructure, in line with national investment objectives promoted by the Namibia Investment Promotion and Development Board (NIPDB)⁹³.



Public-Private-Community Partnerships (PPCPs):

Given the semi-rural nature of Ohangwena, PPCPs offer a practical model for involving communities directly in economic development. This approach allows communities to contribute land or other resources while participating in the ownership and benefits of investment projects. Such partnerships are particularly relevant in agricultural processing, renewable energy generation, and small-scale manufacturing.

The Ohangwena Regional Development Plan (2023–2028)⁹⁴ highlights the potential for inclusive development through community-based partnerships that foster employment and local value addition, consistent with national goals outlined in NDP6⁹⁵.



Joint Ventures

The Namibian government encourages joint ventures between domestic enterprises and international investors to promote skills transfer, technology diffusion, and market access. Ohangwena's proximity to Angola and its strategic location within the northern trade corridor make it ideal for cross-border manufacturing and logistics ventures. The Namibia Industrialisation, Trade, and SME Development Policy (2021–2030)⁹⁶ and the Investment Promotion Framework and Policy Guide⁹⁷ provide clear procedures for joint venture formation and incentives for investors seeking regional collaboration in sectors such as textiles, agro-processing, and renewable energy.

⁹³ Namibia Investment Promotion and Development Board (NIPDB). (2024). Investment Promotion Framework and Policy Guide. Windhoek: Government of Namibia.

⁹⁴ Ohangwena Regional Council. (2023). Ohangwena Regional Development Plan (2023–2028). Eenhana: Regional Council.

⁹⁵ National Planning Commission (NPC). (2025). Sixth National Development Plan (NDP6): Towards Inclusive Growth and Industrial Transformation. Windhoek: Government of Namibia.

⁹⁶ Ministry of Industrialisation and Trade (MIT). (2024). Namibia Industrialisation, Trade and SME Development Policy (2021–2030). Windhoek: Government of Namibia.

⁹⁷ Namibia Investment Promotion and Development Board (NIPDB). (2024). Investment Promotion Framework and Policy Guide. Windhoek: Government of Namibia.

THE WAY FORWARD

THE WAY FORWARD

The Ohangwena region is steadily positioning itself as a strategic destination for sustainable investment in northern Namibia. The region's improving cross-border trade infrastructure, growing agricultural base, and integration into regional development corridors contribute to its appeal as a strategic investment destination. Ohangwena provides a conducive environment for public, private, and community-driven

“
Ohangwena is emerging as a strategic gateway for sustainable investment, cross-border trade, and inclusive regional growth.”

investments. The region benefits from political stability, progressive decentralisation policies, and proximity to the Angolan and southern African markets, making it a gateway for transboundary trade and agro-industrial growth.

Based on extensive reports and the Namibia Investment Opportunities Catalogue, the Ohangwena Investment Map identifies key investment opportunity areas across manufacturing, tourism, healthcare, and agriculture.

Promoting sustainable investment in Ohangwena can serve as a catalyst for transformative regional development, supported by the following key actions:

5.1 POLICY AND REGULATORY REFORMS

The Investment Map highlights existing policies and frameworks that guide investment but points out that it requires continued engagement between regional authorities, investors, and the national government to unlock capital and reduce risks.

5.2 INVESTOR CONVENING

The identified opportunity areas present a foundation for partnerships among the private sector (foreign and domestic), financiers, and development agencies.

The region will be hosting an annual Ohangwena Investment Forum, convened by the Regional Governor's Office, to promote business-to-business engagements and attract impact-driven and blended finance.

5.3 IMPACT MEASUREMENT AND MANAGEMENT

To ensure transparency and accountability in regional investments, the Ohangwena Investment Map provides a basis for adopting SDG-aligned impact measurement frameworks.

Using the SDG Impact Standards and the Namibia Sustainable Finance Framework, investors can assess the economic, social, and environmental impacts of their projects.

This approach strengthens investor confidence, ensures compliance with national ESG policies, and aligns with Namibia's commitment to the 2030 Agenda for Sustainable Development.

5.4 DATA AND INVESTMENT ANALYTICS

The Ohangwena Investment Map will be enhanced through the development of a digital investment intelligence platform, hosted by NIPDB and linked to the website of the Office of the Ohangwena Governor.

This would centralise real-time data on investment opportunities, land availability, incentives, and socio-economic indicators, thereby supporting data-driven decision-making for prospective investors.

Future iterations of the Investment Map will include sectoral and constituency-level analyses, offering more granular insights for public and private actors.



ANNEXURES



ANNEXURES

ANNEX A: OHANGWENA REGION CONTACTS

This part provides important contact in the Ohangwena Region, which will help potential investors in making follow-ups for the opportunities they want to invest in the Ohangwena Region.

REGIONAL GOVERNOR'S OFFICE

<i>Office</i>	<i>Contact Details</i>
Regional Governor (RG)	Hon. Kadiva Diana Hamutumwa
Post Office Box	55, Eenhana
Telephone / Mobile	+264 65 263906
E-mail	governor@ohangwena.gov.na
Control Administrative Officer	Mrs Veronica Ekandjo
Post Office Box	55, Eenhana
Telephone / Mobile	+264 65 263906
E-mail	Veronica.Ekandjo@ohangwenaog.gov.na